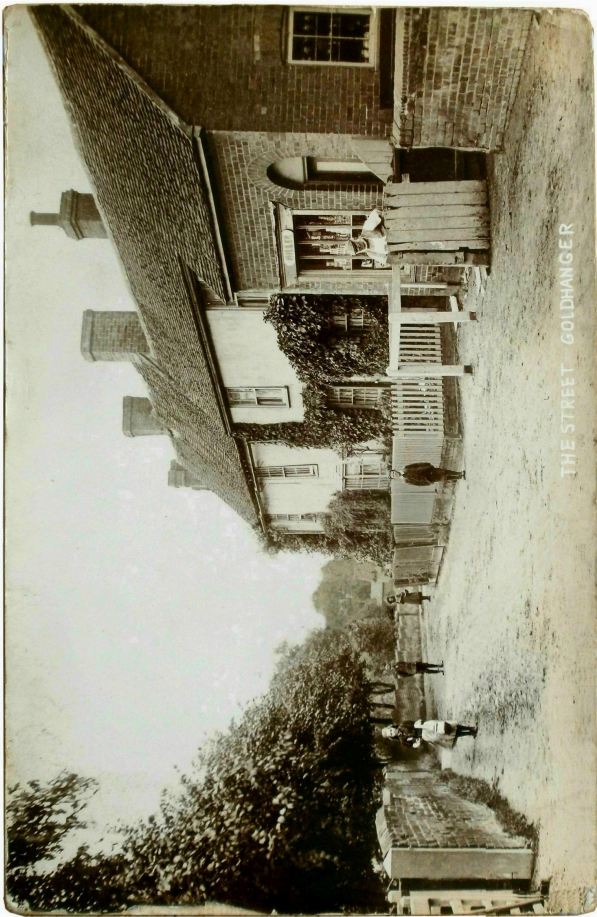


EARLY POSTCARDS THAT SHOW RESIDENTS





## 129 Years of Goldhanger Parish Magazine

There has been a Parish Magazine since 1895 when the Revd. Frederick Gardner started it shortly after being appointed Rector at Goldhanger. In all those years there have only been a few breaks in publication, most notably during both World Wars.

**All articles (ideally in PDF or plain text in an email) to be submitted by midnight on the 15th of September, and advertising (including For Sale and Wanted) by midnight on the 13th of September please. Please contact the editors if you have any questions about your article.**

<b>Magazine Editors:</b>	Stephen & Chris	788369 parishmag@goldhanger.org.uk
<b>Advertising</b> (for Magazine & Goldhanger Website)	Carol	advertising@goldhanger.org.uk

**For Sale or Wanted** - To list your items in the magazine the minimum donation is £1 per advert. If you would like to donate more it would always be welcome.

**Please note:** We cannot guarantee the delivery date of your magazine. Please bear this in mind when advertising functions at the beginning of the month.

This magazine is run entirely by volunteers and relies on donations and advertising to fund it. It costs approximately £1 per issue to produce. We print about 350 copies each month.

**Donations can be made at any time.** Cheques made payable to **Goldhanger Parish Magazine** please - or you can go to the Goldhanger website and make a donation online.

Current and previous issues of the magazine are available in glorious technicolour from the Goldhanger website at: [www.goldhanger.org.uk](http://www.goldhanger.org.uk).

## Tide Times

<https://www.goldhanger.org.uk/index.html>

<https://www.tidetimes.co.uk/maldon-tide-times>





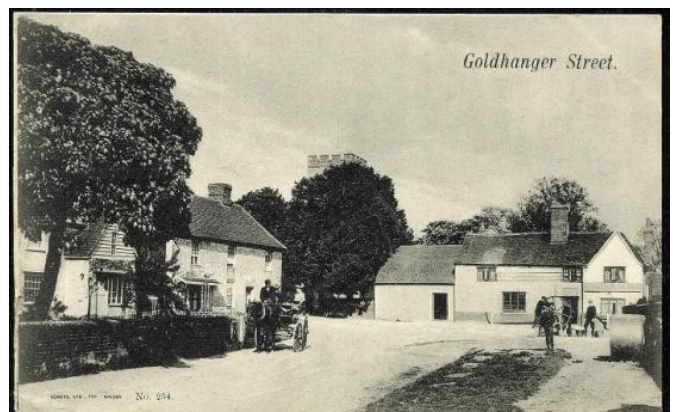
## Early postcards showing local residents

Our legacy of postcards and photos is an important source of information on what the village was like around 100 years ago and for this reason they have frequently been included in these local history articles. Postcard collectors however know that the most sought after postcards are those that show street scenes combined with people and modes-of-transport, and this is reflected in the price at which these cards change hands.

On this month's front cover and below are a collection of cards showing recognisable places in the village together with local residents. The photos were taken at the time when the cameras were large wooden boxes on tripods with a glass-plate negative that needed several second exposures to obtain good quality pictures. This meant those involved had to stand completely still and it seems children were ideal and willing volunteers who are often seen standing to attention.

It would have been harder to include horses, dogs or cattle as they would not have kept still, however they do appear in the distance on some views.

There are two ways we can date the pictures: the style of lettering and the numbers show on the front, and the postmarks on the reverse, although in our archive we have only the views and very few postmarks. All the postcards here date from between 1900 and 1920.



for more postcard images search for: goldhanger past postcards

<http://www.churchside1.plus.com/Goldhanger-past/Selection%20of%20Postcards.htm>

David Newman



# Goldhanger Village Hall



Now a newly modernised venue for birthday parties, discos, children's parties, quiz nights & theme nights.

Comfortably seats 80 people using our chairs and tables - you are welcome to bring your own enabling you to seat more.



See [Village Hall Calendar](#) for more details of events.

**Pink recycling and green waste food bags** are available 15 minutes before each Parish Council meeting every 2nd Wednesday of the month from 7.15pm

**Gentle Yoga** every Monday 7-8pm  
*Nikki Myers 07963 785718, [youtimeyoga@live.co.uk](mailto:youtimeyoga@live.co.uk)*

**Salsa** every Tuesday 7:30-8:30pm  
*Nicola 07944 226267, [riversidesalsa@gmail.com](mailto:riversidesalsa@gmail.com)*

**Chair Yoga** every Wednesday 11am  
*Nikki Myers 07963 785718, [youtimeyoga@live.co.uk](mailto:youtimeyoga@live.co.uk)*

**Parish Council** second Wednesday of the month 7:30-9:30pm

**Karate** every Thursday 6-8pm

**Art Club** second Thursday of the month 2-4pm  
*Catherine 01621 788488, <http://goldhangerartclub.co.uk>*

**Film Club** third Wednesday of the month (*except July and August*), doors open 7pm, film 7:30pm see *advert for details*

## Village Hall Bookings

Contact Jackie Christy on 788432 or:  
<http://www.goldhangervillagehall.co.uk/bookings/#form>

Web: [www.goldhangervillagehall.co.uk](http://www.goldhangervillagehall.co.uk)

Facebook: [Goldhanger Village Hall](#)

Twitter: [@Goldhanger\\_VH](#)

Hire charges		Goldhanger Resident Rate (per hour)	General Rate (per hour)
Monday-Friday	9.00 -18.00	£12	£14
	18.00 - 23.00	£17	£20
Saturday-Sunday	9.00 - 18.00	£17	£20
	18.00 - 23.00	£22	£27



# Community Page

## Goldhanger Sailing Club

[www.goldhangersailingclub.org.uk](http://www.goldhangersailingclub.org.uk)

All types of sailing, including sailboarding and canoeing, with racing organised on Sundays during the season, there is something for everyone who loves the water.



## Stamps for the Hospice

Your used stamps can be dropped in to the Hospice shops in Maldon or the Bentalls Centre in Heybridge.



## Maldon District Council Monthly Surgeries

1st Saturday of the month at the Queens Head Tolleshunt D'Arcy. from 12 noon to 1pm.

Meet Tolleshunt D'arcy and Tollesbury Ward Councillors and/or raise issues or problems relating to local council matters.



## Bellringing [www.bellringing.org/learntoring/](http://www.bellringing.org/learntoring/)

Every Wednesday 7:30pm - 9:30pm and for services on Sundays. Newcomers welcome. Contact Sarah Scannell 07789 990942 or email [goldhangerbells@outlook.com](mailto:goldhangerbells@outlook.com).



## Mother's Union

4th Friday of each month at 1.45pm at Honywood Hall, Hall Road, Great Totham.



## Coffee mornings

Community Room at St. Peter's Church on Tuesdays between 11am and 12noon. Everyone is welcome. Pop along, bring your friends, and have a chat over coffee.



## Wednesday lunchtime Picnic Service

For Parents and toddlers. Last Wednesday of the month in term time. St. Peter's Church.



## Shanties in the Pub

Billiards room at the Chequers every other Tuesday (from 12th October) from 7pm.

Just join in the responses or take a lead as you wish. Ooo-Aaaar!





# Goldhanger Church Services

**Sunday 1st September      Trinity 14 / Creation 1**

9.30am      Parish Communion (CW)

**Sunday 8th September      Trinity 15/ Creation 2**

10.00am      Family Service.

**Sunday 15th September      Trinity 16/ Creation 3 Battle of Britain Sunday**

9.30am      Parish Communion (CW)

Followed by Parachuting teddies at 11.00am

Bring your Teddies to the service and afterwards

watch them make their perilous ascent to the top of the tower before parachuting gracefully down.

**Sunday 22nd September      Harvest Thanksgiving**

9.30am      Parish Communion (BCP)

Donations suitable for Maldon Food pantry would be appreciated

**Sunday 29th September      Michael and All Angels**

10.30      Benefice Communion at St Mary's Salcott

(no service at Goldhanger)

**On-line Sunday services** can be found at:

<https://www.churchofengland.org/news-and-media/church-online/weekly-online-services>

Morning Prayer on YouTube on Wednesdays and Fridays both at 10.00am.

Jo Lacey has started offering Evening Prayer once a month on YouTube.

<https://www.achurchnearyou.com/church/6651/> or

<https://www.achurchnearyou.com/church/6657>

## **Weekday Holy Communion Services**

Weekday Holy Communion service from The Book of Common Prayer

Every Wednesday at St Nicholas, Tolleshunt D'Arcy at 10.00am

And every Saturday at All Saints, Little Totham at 5.30pm

Please get in touch with Lizzie Armour or the churchwardens if you are considering baptism for yourself or your children, confirmation, and weddings Please contact Rev'd Tracey for funeral arrangements.

### **Parish Prayers**

If you would like someone, an event or concern included in church prayers please contact Kim Evans or George Bunting. Votive candles are lit at Sunday Services.

## **Raise free donations for Goldhanger church through Easyfundraising**

All you need to do is:

1. Go to <https://www.easyfundraising.org.uk/causes/stpeterschurchgoldhanger> and join for free.
2. Every time you shop online, log in to [www.easyfundraising.org.uk](https://www.easyfundraising.org.uk) first to find the retailer you want and start shopping.
3. After you've made your purchase, the retailer will make a donation to the church at no extra cost to you whatsoever!



# St. Peter's Church Goldhanger

## Priest in Charge of the Blackwater Benefice\*

## Vacancy

### Associate Priests

Reverend Sue  
Godsmark

01621 891513  
[suegodsmark@aol.com](mailto:suegodsmark@aol.com)

Reverend Sarah Clare

07762 840905 / 01621 868819  
[sarahclare9@gmail.com](mailto:sarahclare9@gmail.com)  
01621 868415

Reverend Andrew Vince

[andrew.vince15@gmail.com](mailto:andrew.vince15@gmail.com)

### Church Wardens:

Mr George Bunting

01621 929690  
[gvbunting@gmail.com](mailto:gvbunting@gmail.com)

Mrs B Abrey

### Benefice Administrator

Lizzie Armour

07908776750  
[office.blackwaterbenefice@gmail.com](mailto:office.blackwaterbenefice@gmail.com)

(Please contact Lizzie if you wish to book, a wedding, baptism etc. She is available on Tuesday and Thursday mornings. Messages left at other times during the week will be responded to at regular intervals)

### Church flowers

Mrs Elaine Clark

788686  
[elaclark@me.com](mailto:elaclark@me.com)

\* Goldhanger, Little Totham & Great Totham and Tollesbury, Salcott, Tolleshunt D'Arcy and Tolleshunt Major

St. Peter's Goldhanger website: [www.st-peters-church.goldhanger.org.uk](http://www.st-peters-church.goldhanger.org.uk)

## Flags for September

September 22nd



Harvest Festival



## Ministry Team Message

The Power of the Bible.

Do you ever think the Bible is irrelevant in the 21st Century? Is it just a book of stories from ancient times with no relevance to the modern society? Let's challenge that view.

I have just finished my first year of three at 'Vicar school' to become a Priest. I have been studying theology which has been both formational, challenging and fascinating. Probably my favourite unit has been the study of the Psalms. The Psalms is a book of hymns in the Old Testament that covers every possible emotion, from ecstatic joy to the depths of despair. There are 150 Psalms, and they are an important part of the daily services. A useless fact, if you say Morning Prayer and Evening Prayer everyday you will cover all the Psalms in a month, if you were a medieval monk, you would say all in a week due to the number of services you would attend each day.

All this may be interesting, but this does not make the Psalms useful in 21st century. So, are they? I have discovered they play a really key role in expressing the inexpressible in our daily lives.

Have you ever been in a place and have been overcome by its beauty? There are so many places in our country and abroad that leave me speechless, Psalm 104 is a hymn to God the Creator. What about those times when life is overwhelming and hopeless? Words can't express how low you are feeling or how angry you feel against the world or God? There are Psalms of desolation which put into words what you are unable to, life can't get much worse than the picture painted in Psalm 88. Psalms also give great comfort, most of us are familiar with Psalm 121, The Lord's my Shepherd, often used during funeral services. Use the power of Google to read them.

As part of my studies, I had to read various theological opinions on the Psalms and I found Bruggemann really interesting, he categorised the Psalms into three types, orientation, disorientation and reorientation. (Brueggemann The Psalms, the Life of Faith' Fortress Press 1995). If life is fine (orientation) then there are Psalms for that (Psalm 104). If life is completely hopeless and everything feels disorientated, Psalm 137 (some will recognise this, made popular by Boney M in the song, By the Rivers of Babylon). If you are looking for comfort and want to feel reassured of God's love for you then my favourite is Psalm 121. This is a Psalm of reorientation.

I really like this idea of reorientation, for some of us, maybe we have never thought about God and the Christian faith but do feel the need of reorientation in our lives. For others, maybe we used to be orientated to God, but are no longer, maybe its



time for some reorientation. For some, life is difficult, and God seems distant.

However you feel, there is a Psalm to put words to your feelings.

My favourite Psalm 121, one of reorientation:

1-2 I look up to the mountains;

does my strength come from mountains?

No, my strength comes from God,

who made heaven, and earth, and mountains.

3-4 He won't let you stumble,

your Guardian God won't fall asleep.

Not on your life! Israel's

Guardian will never doze or sleep.

5-6 God's your Guardian,

right at your side to protect you—

Shielding you from sunstroke,

sheltering you from moonstroke.

7-8 God guards you from every evil,

he guards your very life.

He guards you when you leave and when you return,

he guards you now, he guards you always.

Penny-Anne Adams (Ordinand, Little Totham Church)

## TooGoodToGo

Every day, unsold food from your favourite restaurants, grocery stores, cafés, and shops goes to waste simply because it hasn't sold in time. The Too Good To Go app makes it easy to make a difference, allowing you to save Surprise Bags of good food at an even better price.

Too Good To Go is a free, anti-food-waste app that lets you rescue delicious, unsold food from businesses to save it from going to waste.

Use the app to explore shops and restaurants in your local area and save Surprise Bags of surplus food from going to waste at a great price.

Download the app here: <https://www.toogoodtogo.com/en-gb>

## Carpet Bowls

Carpet Bowls is on alternate Fridays in the Village Hall, starting on Friday 6th September and running through to April 2025.

Time: 1.45pm to 4.00 pm

No experience required, everyone welcome. Come along for a social and fun couple of hours.



WE GO THE EXTRA MILE

---

INDEPENDENT & LOCAL  
SUPPLIERS OF  
DOMESTIC HEATING OIL  
& COMMERCIAL FUELS

---

CALL US TODAY FOR A QUOTE

**01621 868 868**

OR VISIT [WWW.BLACKWATERFUELS.CO.UK](http://WWW.BLACKWATERFUELS.CO.UK)



GOLDHANGER VILLAGE HALL COMMITTEE

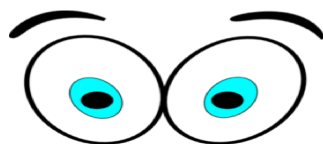
Invites you to



Saturday 28th September

THE VILLAGE HALL

Doors Open 7.00 pm



Eyes Down 7.30 pm

A FUN FAMILY EVENING!



Bring your own drinks & nibbles  
Refreshments & cakes will be served  
in the interval



# Bakers of Danbury Ltd

*High quality craftsmanship*

CONSERVATION | RESTORATION | NEW BUILD

Our project management team and in-house expert tradesmen have long been associated with the many fine historic, churches and listed buildings within the Essex area:

As building contractors we offer:

- Repair and restoration to historical & listed buildings
- Contemporary domestic and commercial conversions
- Luxury new build extensions
- Traditional timber windows and doors
- Bespoke joinery and furniture
- Polite tradesmen and minimal disruption

T: 01245 225876

W: [www.bakersofdanbury.co.uk](http://www.bakersofdanbury.co.uk)

E: [info@bakersofdanbury.co.uk](mailto:info@bakersofdanbury.co.uk)



*Established over 145 yrs*



## FAST FIX BOILERS & TANKS

**SPECIALISTS IN OIL FIRED  
BOILERS & TANKS**

**FAST  
RELIABLE  
GOOD VALUE  
LOCAL**



**01621 862526**

[www.fastfixboilersandtanks.co.uk](http://www.fastfixboilersandtanks.co.uk)



## Accommodation Needed

On The Move Again!

I'm looking for affordable  
accommodation from December 2024.

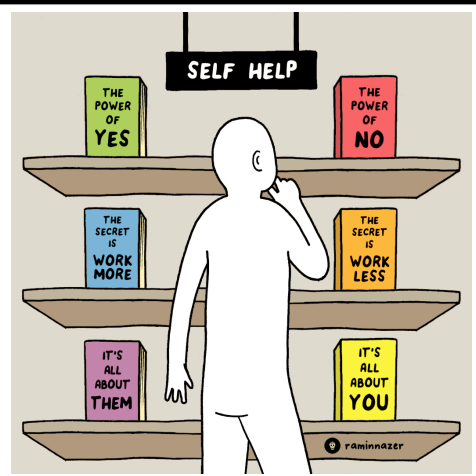
If you can help please contact Ruth on 07773 673486.

Thank you.



I just came from a bookshop where I asked the saleswoman how to find the self-help section ...

She said if she told me it would defeat the purpose.



The village magazine is supported only by our regular advertisers and your donations. That's it!

Any articles about the village or for the benefit of the village will always be included free of charge.

Whilst we try to include all other submissions these increase the cost of the magazine, therefore any donation you feel able to make for your personal interest article will be gratefully received.

# Volunteers needed!

**Maldon & District Citizens Advice is expanding its team of advisers to meet the growing need for advice in our community.**

**We have a variety of roles from reception to giving advice in person and on the telephone.**

**Do you have a day a week to give and enjoy helping others?**

**If you are literate, numerate and have good IT skills, please get in touch to find out more.**

**We offer great training and a highly supportive working environment**

**Why not come along for a "taster" session and see for yourself?**



**Maldon  
& District**

**Please fill in the volunteer  
"enquire now" form on our  
website  
[www.maldoncitizensadvice.org.uk](http://www.maldoncitizensadvice.org.uk)**



## **GOLDHANGER PARISH COUNCIL**

**Notes of the Parish meeting held on the 14th Aug 2024. Full minutes can be viewed on the website or village noticeboard once they have been approved at the next Parish Council Meeting.**

**[www.parish-council.goldhanger.org.uk](http://www.parish-council.goldhanger.org.uk)**

**[clerk.gpc@outlook.com](mailto:clerk.gpc@outlook.com)**

### **Planning Applications**

24/00489 Proposed new build 4 bed bungalow and detached garage. Land north of 6 Church Street - Objected

### **Other Planning issues**

**23/00830 Land off head Street – Appeal Ref APP/X1545/W/24/3345671**

A hearing date had now been set in Sept 24

**Parking Issues** – Speeding patrols were now being carried out

**Flooding and drainage** –Draining issues were still ongoing.. CCTV inspection survey was being requested through Highways of the surface drain on Maldon Road now they had been jetted

**Highways** Various grass verges needed cutting and this had now been reported since MDC now have no Rangers to do this work but Highways had responded that as this was not as serious as other issues they were aware of they would not be actioning at present

**Correspondence** – A resident had offered to supply some play equipment for the playing field, although the Parish Council were grateful of this, felt that regrettably couldn't accept this due to compliance issues

A young person in the village had taken it upon themselves to do some litter picking and the Council were extremely grateful for this

VE Day May 8<sup>th</sup> 2025 info received had been passed onto the Village Hall Committee

IT back up storage was agreed to be purchased for the Parish Computer

Next meeting 14<sup>th</sup> August 2024 at 7.30pm



## Greentouch Plastering Services

All aspects of plastering covered  
including rendering, boarding,  
skimming

No job too big or too small! Please  
contact me for a free no obligation  
quote.

Please contact  
Robbie on  
07424405036 or  
01621 493644 for  
further information.



## Allotments.

If you would like an allotment  
please phone or e-mail

Clive Cheeseman

[cheeseman3@sky.com](mailto:cheeseman3@sky.com)

01621 788433



[chelmsfordplumbingandheating.co.uk](http://chelmsfordplumbingandheating.co.uk) | [sales@chelmsfordplumbingandheating.co.uk](mailto:sales@chelmsfordplumbingandheating.co.uk)



**CHELMSFORD**  
PLUMBING & HEATING

# 01245 478588

A trustworthy family run business specialising in Gas,  
Oil, LPG, Electrical & Plumbing services

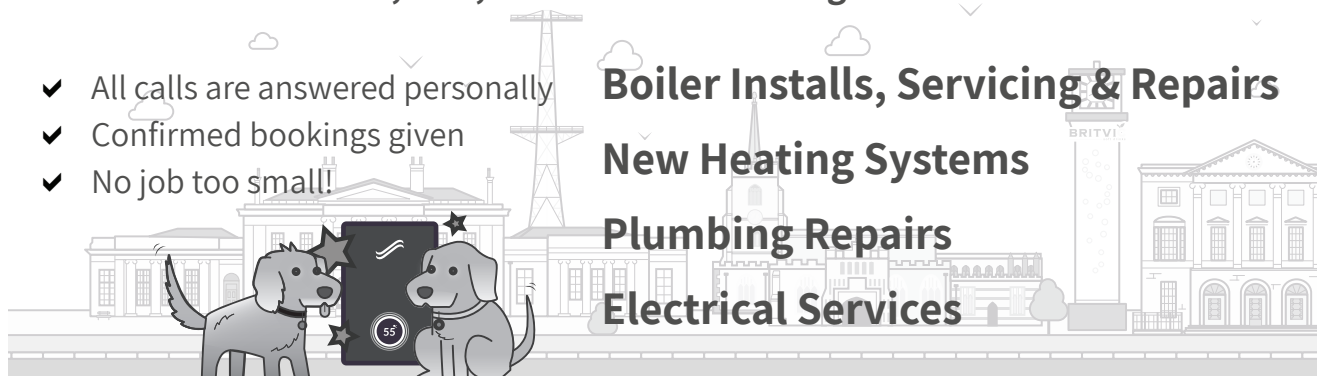
- ✓ All calls are answered personally
- ✓ Confirmed bookings given
- ✓ No job too small!!

**Boiler Installs, Servicing & Repairs**

**New Heating Systems**

**Plumbing Repairs**

**Electrical Services**



**WORCESTER**  
Accredited Installer

**BOSCH**

**ehc**

**GRANT**

**NICEIC**  
APPROVED  
CONTRACTOR

**OFTEC**

**safe**  
REGISTER

# Christopher THE LOCKSMITH

## ARE YOUR LOCKS BEHAVING BADLY?

We Value Old Fashioned Customer Service  
A Local Trusted Family Business Since 1989

 Specialist in UPVC & Wooden Doors

 No Call Out Charge

 No Fix No Fee

 All Work Fully Guaranteed

 10% Senior Citizen Discount



For More Advice & Help Call Christopher:

# 07772 111 222

[www.christopherthelocksmith.co.uk](http://www.christopherthelocksmith.co.uk)



## PC Doctor Operations Limited

**For all your computer requirements including:**

Virus prevention, detection & removal  
Broadband, Networking, Wireless & Firewall set up  
Email & SPAM filtering  
Hardware Repairs & Upgrades  
Software Faults & Crashes  
Backup Solutions & Data Recovery  
Software Installation & Removal  
Hardware & Software Supplied  
Website Management • Computer Training

**Health  
Checks  
£39.99**

**Office: 01621 891064 • Mobile: 07990 565336**

**Email: [support@pcdocops.co.uk](mailto:support@pcdocops.co.uk)**

**Website: [www.pcdocops.co.uk](http://www.pcdocops.co.uk)**

Monthly subscription service available to provide complete "peace of mind" and allow you to spread the cost of your IT requirements.

Please contact for further information.

## The current price list for greyscale printing in the magazine.

Page Size	Full Cost	Early payment rate	Six months	Per month rate
<b>Full</b>	£170	£160	£90	£16
<b>Half</b>	£100	£90	£55	£10
<b>Quarter</b>	£65	£55	£35	£7

Online adverts on our website remain at £15 for the year. Full colour adverts can be used and will link back to your own website.

For all advertising enquiries: [advertising@goldhanger.org.uk](mailto:advertising@goldhanger.org.uk)



# Avanti Photographics

## Passport Photos

in the comfort of your own home  
quick turnaround  
and guaranteed to meet the strictest requirements



## Framing

bespoke, memorabilia  
and canvas stretch service.  
I can collect and deliver in  
the Maldon area

## Family and Pet Portraits

in the comfort of your own home,  
on location or in a studio environment

## Wedding Photography

specialising in photographing the second time around  
celebrations. Smaller/week Weddings, Marriage vows renewal  
celebrations, Christenings, and Birthday parties or smaller events  
which are just as important

For more information or to book an appointment please call me  
on 07485 467 976



# Goldhanger Village Hall Film Club



**Wednesday 18th September**  
7pm for 7:30pm



The extraordinary story of Amy Winehouse's early rise to fame and the making of her groundbreaking album, Back to Black. Told from Amy's perspective and inspired by her deeply personal lyrics, the film follows the remarkable woman behind the phenomenon and the tumultuous relationship at the centre of one of the most legendary albums of all time.

**£7** pay on the door (card or cash)

Plenty of parking behind the hall / lifts available from the village if required,  
contact Jill 788738 or Debbie 788709



Proceeds in support of the Village Hall, Head Street CM9 8AY





A taster of things to come.....

# Goldhanger Gala 2024

## 14th & 15th September

A full weekend of fun for all the family

Food, drink, live music, arts & crafts, teas  
& cakes, treasure hunt, book stall

plus

Saturday – classic car & bike displays,  
BBQ, try your hand at bell ringing,  
karate demo, morris dancing

Sunday – childrens activities, teddy  
parachutes, music on the field

.....and more to follow!

Maybe a table top sale along  
Head Street if someone would  
like to organise!





# **Gala Weekend**

## **Music On The Field**

**With**

**Carol & Suki**

**+**

**The Goldhanger Shanty Crew**

**Sunday 15<sup>th</sup> September**

**13.00 – 15.00**

**On the**

**Village Hall Field**

**Head Street**

**Goldhanger CM9 8AY**

**(Weather permitting)**

**Bring your chairs and maybe a picnic  
and enjoy a chilled out afternoon of  
music**



**DOMESTIC APPLIANCE  
REPAIRS**

Prompt and Reliable Service

Washing Machines—Dishwashers  
Tumble Driers—Fridges & Freezers

NEW APPLIANCES SUPPLIED  
AT COMPETITIVE PRICES

Also Large Stock of New & Used  
Spare Parts

PLEASE RING ALAN TAYLOR  
01621 773709

Mobile: 07885 483595

Family Run Business  
Est. 20 yrs

>>> Could **YOU** be a **Blood Runner**? <<<



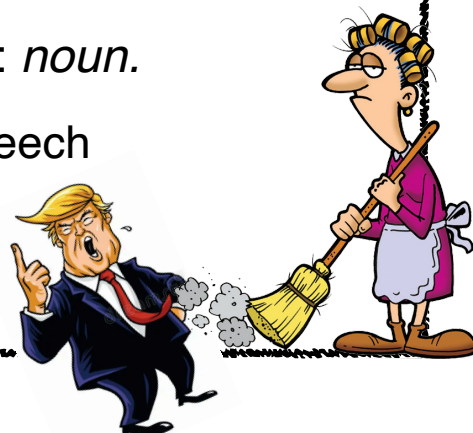
↓ See our article ↓

[EssexVoluntaryBloodService.com](http://EssexVoluntaryBloodService.com)

**Word of the Month**

Parlambing: *noun*.

Rambling speech



**B P A Kennedy**  
**Plumbing and heating engineer**

Gas and oil boiler servicing/repair

New boilers

Central heating up grades/repair

New radiators

Desludging available

New bathrooms

Ball valves etc

**Telephone : 07786 954656 or**  
**07879 643583**

# The Chequers Inn



The Square, Goldhanger, Essex, CM9 8AS

Tel: 01621 788203

[www.thechequersgoldhanger.co.uk](http://www.thechequersgoldhanger.co.uk)

Great home cooked food. Several local suppliers used.  
Wonderful selection of cask ales, beers wines and spirits.

Great range of non-alcoholic drinks.

Pub games including bar billiards, darts and dominoes.

Dogs welcome.

Real fires and log burner.

Regular live music and events.

Great hospitality and friendly service.

Take away food, coffees, drinks & cakes available.

Dominic and the team look forward to welcoming you soon.



MID ESSEX ELECTRICAL LTD

# 01621 212671

CALL GARETH TODAY FOR FREE A QUOTE

**RELIABLE - CERTIFIED - INSURED**

SMALL JOBS  
MAINTENANCE AND REPAIRS  
OUTSIDE LIGHTS  
FAULT FINDING  
HEATING  
EXTRA SOCKETS  
NEWBUILDS  
REWIRES



NICEIC REGISTRATION NUMBER D610120

City &  
Guilts



## Keeping the county warm



Fuel Services

Contact BFS for prompt delivery of your domestic heating oil direct from our local Danbury Fuel Services depot. You'll find no better service, no better value.

T 01245 425251 [www.bfsfuelservices.uk](http://www.bfsfuelservices.uk)



# a fresh approach to care

## 1 to 24 hour care in your own home

Independence isn't always easy.  
When support is needed,  
it's good to know that  
there's someone close by  
that really cares.

In Home Care Chelmsford specialise in care for Dementia and Alzheimer sufferers and other mental or physical conditions; from 18+ we provide support with day to day tasks such as cooking, cleaning or providing companionship and conversation.

We believe everyone, no matter what age, deserves to have their needs met with understanding and compassion, to feel cared for, loved and looked after.

As a new local provider we have availability now with care plans to suit everyone, if you would like to talk to us, we would be happy to help.

**inhomecare**  
*home is where the heart is*



**Part of an Award Winning Group,  
In Home Care Ltd**



**[www.in-homecare.co.uk/chelmsford](http://www.in-homecare.co.uk/chelmsford)**

**Call: 01245 979 520**

**Email: [chelmsford@in-homecare.co.uk](mailto:chelmsford@in-homecare.co.uk)**

** [inhomecarechelmsford](https://www.facebook.com/inhomecarechelmsford)**

**40 Moulsham Street, Chelmsford CM2 0HY**

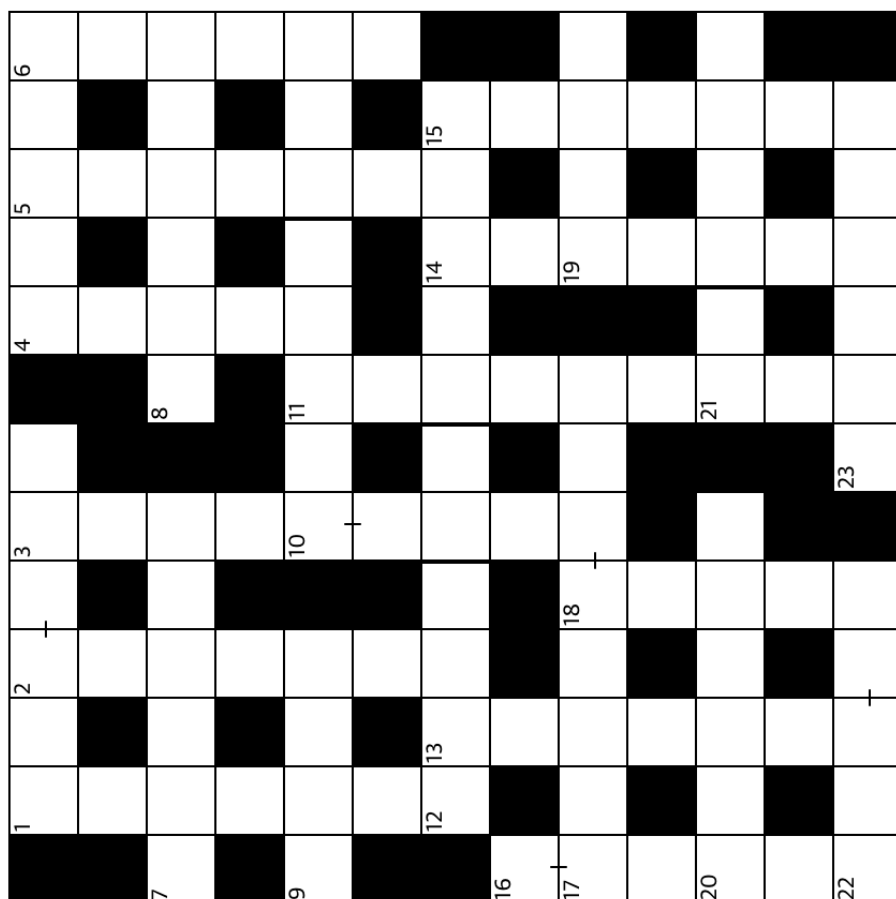
# Superhero Word Search

D	Z	G	W	V	B	H	S	P	A	Q	Z	V	D	Z	M	N	N	R	U
H	V	X	G	A	B	B	T	N	X	F	F	Z	A	E	O	X	X	V	O
G	P	T	T	F	L	V	R	O	K	R	E	L	K	N	W	E	C	T	A
L	X	M	B	T	H	H	O	A	T	A	G	G	L	O	L	H	J	D	G
R	A	Y	Q	C	U	U	N	Q	V	S	J	J	M	N	S	A	M	B	K
N	R	S	T	I	W	S	G	U	K	E	A	A	N	S	O	F	P	S	S
E	L	N	J	Q	C	F	A	I	D	C	N	F	O	C	Q	R	C	N	U
L	Q	B	K	Y	N	E	H	S	J	H	T	L	W	H	W	X	I	D	H
G	O	X	T	W	A	M	D	P	C	S	D	N	A	H	U	L	K	M	P
Q	H	R	M	H	M	A	C	I	R	E	M	A	X	E	R	A	P	Y	O
D	W	E	F	F	R	N	X	D	M	T	P	T	H	W	G	I	F	M	R
Y	Y	H	A	V	E	N	G	E	R	S	T	S	G	R	O	L	W	W	E
V	D	T	H	Q	P	A	N	R	V	B	A	W	W	O	E	N	P	E	H
N	V	N	Q	Z	U	M	L	M	P	L	I	S	P	H	X	H	D	Q	W
I	S	A	V	K	S	A	R	A	F	S	L	Y	C	T	F	L	A	E	J
A	A	P	Q	K	G	U	T	N	L	L	Z	T	H	W	Q	K	U	O	R
T	H	G	I	F	C	Q	K	T	G	N	T	O	P	T	G	N	S	Q	J
P	Q	E	N	S	F	A	E	I	M	T	F	A	L	R	I	G	T	A	B
A	O	X	U	P	E	S	L	B	E	E	V	V	Q	C	K	R	B	P	S
C	W	X	M	U	Z	I	U	B	J	O	G	W	G	X	N	O	F	J	X

AMERICA  
BATGIRL  
BRAVE  
FIGHT  
HULK  
PANTHER  
SUPERMAN

AQUAMAN  
BATMAN  
CAPTAIN  
FLASH  
IRON  
SPIDERMAN  
THOR

AVENGERS  
BLACK  
FAST  
HERO  
MAN  
STRONG



## Answers next month

### Online games and puzzles to keep you amused

Online games and puzzles: <https://www.games.co.uk/games/puzzle>

Online jigsaw puzzles: <https://www.jigsawplanet.com/>

Online brainteasers, maths puzzles, word games, sudokus and memory games: <https://www.mindgames.com/>

### Across

- 1 Remote (3-3)
- 4 Kind of scale - former PM (5)
- 7 Means of getting into a tin (6)
- 8 Kind of nut (6)
- 9 Dry sherry (4)
- 10 1950s rebel teen (5,3)
- 12 Extremely tough (4,2,5)
- 17 Centre of a target (5-3)
- 19 Choice - purple colour (4)
- 20 Chronicles (6)
- 21 Agreeing or working well together (2,4)
- 22 Authorisation (3-2)
- 23 Mean (6)

### Down

- 1 Dandy-like (7)
- 2 Resentment (7)
- 3 Excellent (5-4)
- 4 Embroiled - covered in mud (5)
- 5 Ahab's wife (7)
- 6 Races in which teams compete (6)
- 11 Flower with a white, fluffy head (9)
- 13 In abundance (7)
- 14 Deadlock (7)
- 15 Astonished (7)
- 16 German subs (1-5)
- 18 Barrage of shots (5)





Vend24 started out as your local 24 hour convenience machine selling fresh produce from butchers meats to wholesome vegetables and delicious pies, located at Millbeach seaside resort Maldon Essex.

Our love for good quality food has expanded even more that we now want everyone to be able to order and receive quick local delivery. Our delivery days will differ but we are trying to aim for Wednesday - Saturday.

Free local delivery and no minimum order

We can also quote for events where buffets would be required and have a wholesale price for restaurants and like minded businesses.

tomfullagar@hotmail.co.uk

07730 581446

www.vend24.uk

# A.G. Smith

Est. 1912

## Funeral Directors & Monumental Masons

- 24-hour caring, supportive, professional
- Private chapel of rest
- Religious and non-religious funerals
- Green & woodland funerals
- Mercedes Benz hearse & limousines
- Hand crafted memorials
- Funeral plans to give you peace of mind - Golden Charter Funeral Plan Introducer

**Maldon: 01621 854 293**

7 Spital Road, Maldon, CM9 6DY

**Southminster: 01621 774 557**

44 Station Road, Southminster, CM0 7EW

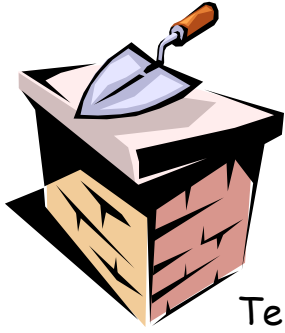
**enq@agsmithfunerals.co.uk**



FUNERAL PLANS FROM  
**Golden Charter**  
Smart Planning for Later Life



**Serving our local community since 1912 | www.agsmithfunerals.co.uk**



## **Owers & Son**

**Bricklaying & General Building**

**"Elvers" Fish Street Goldhanger**

**Maldon Essex CM9 8AT**

**Telephone: 01621 788272 Mobile: 07745 204587**

**E-Mail: mark.owers1@btinternet.com**

**Brickwork, General Building, Plastering, Carpentry, Decorating, Fencing  
Tiling, Garden Clearance, Roofing, Fascias & Soffits, Guttering & Cladding**

**OVER 30 YEARS EXPERIENCE**

**FULL PUBLIC LIABILITY - FREE ESTIMATES & ADVICE**

# **Carpets and Vinyls Seagrass, Sisal & Coir**

**From Nic Lawrence  
Your Local Fitter**

**Choose at Home  
Re- fits also undertaken  
No Job Too Small  
Free Estimates  
Very Reliable 25 Years Experience  
01621 869344  
07771 632028**

# Children's Pages

## Kids Quiz

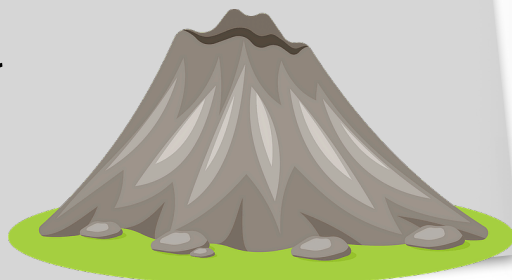
1. In which street does the British Prime Minister live?
2. Name the most famous nurse of Victorian Times who improved care for wounded soldiers?
3. What is the name of the toy cowboy in Toy Story?
4. Pharaoh is the title given to the rulers of which ancient country?
5. Which Italian city is famous for its leaning tower?
6. What is the nickname for the bell of the clock at the Palace of Westminster in London?
7. How many years are there in a millennium?
8. What sweet food made by bees using nectar from flowers?
9. Name the school that Harry Potter attended?
10. In the nursery rhyme, who sat on a wall before having a great fall?

Answers on page 36

I stayed up all night to see where the sun went.  
Then it dawned on me!

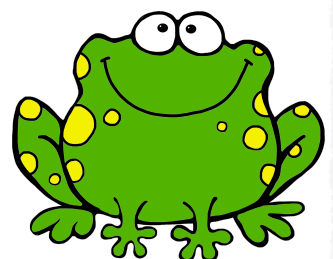
### DID YOU KNOW?

The only continent with no  
active volcanoes is  
Australia



What happens to a  
frog's car when it  
breaks down?

It gets  
toad.



# Children's Pages

(Adults can join in too)

Get your colouring pencils out







**SH**  
SIMON HOULDING  
EST. 1997

CURTAINS | UPHOLSTERY | BLINDS | SHUTTERS | INTERIOR DESIGN  
**QUALITY IN EVERYTHING WE DO**  
www.simonholding.co.uk | 01621 859 484 | 07990 972 676

**Mannequin**  
INTERIORS  
BY RUTH HOULDING



**D.J. Wait & Son**  
**BUILDING CONTRACTORS**

***Your complete building service***

*Fully Insured*  
*Free Advice*

*Family Business*  
*Free Estimates*

**07742957773**

**01621 334357**

**djwaitandson@gmail.com**



# Memorial Stonemasons



Established in Danbury 1878

Bespoke hand-carved designs  
Personal inscriptions  
Restoration and cleaning

Contact us to discuss your requirements  
and a free no obligation quotation

01621 502 262

[agsmithfunerals.co.uk](http://agsmithfunerals.co.uk)

[enq@agsmithfunerals.co.uk](mailto:enq@agsmithfunerals.co.uk)



**Bespoke memorials in association with AG Smith Funeral Directors**

# Broadleaf Fencing



For all your fencing needs

Call for a free estimate

01621 888621

07483 126957

[www.broadleaffencing.co.uk](http://www.broadleaffencing.co.uk)



Experienced



Competitively priced



Highly rated



Supply and install fences & gates  
Bespoke pergolas & decking  
Fence & gate repairs  
Paving & patios





All types of tree work undertaken including:

Crown Reductions and Crown Lifting  
Shaping and Pruning of Trees  
Tree Felling and Tree Removal  
Root Removal and Stump Care  
Hedge Cutting

All works are covered by £5,000,000 Public Liability  
and completed by NPTC Qualified Tree Surgeons

**Telephone: 01621 892932 Mobile: 07919 241412**

**Email: [etmtreeservices@gmail.com](mailto:etmtreeservices@gmail.com)**



# Recipe of the month

## Orzo risotto with lemon and fresh oregano

### Preparation time

less than 30 mins

### Cooking time

10 to 30 minutes

### Serves

Serves 2



### Ingredients

- 2 tbsp olive oil
- 1 large banana shallot, peeled and finely chopped
- 1 large garlic clove, finely chopped
- 225g/8oz orzo pasta
- 650ml/23fl oz hot vegetable stock
- small handful chopped fresh oregano
- 25g/1oz unsalted butter
- ½ unwaxed lemon, finely grated zest and juice
- sea salt and freshly ground black pepper

### Method

1. Heat the oil in a heavy-based saucepan over a medium–high heat and gently fry the shallot with a generous pinch of salt for 5 minutes, or until just translucent. Add the garlic and fry for a further minute.
2. Add the orzo to the pan, stirring until all the pasta is coated.
3. Add a quarter of the stock and turn down the heat to medium–low. Continue adding the stock a quarter at a time, stirring regularly until the pasta has absorbed all the liquid and is tender but still has a little firmness at the centre. You may need to add a splash more water, or you might not need to use all the stock.
4. Stir in the oregano, butter, lemon zest and juice, to taste. Season with salt and pepper and serve immediately.





## Answers to August crossword

1	P	O	2	S	T	3	C	A	4	R	D		5	S	6	P	E	7	W
	I		A		O				E		8	S			A			O	
9	E	D	W	I	N				10	B	L	U	S	T	E			R	
	S		D		S				U			R			I			K	
		11	M	U	L	T	I	F	A	R	I	O	U	S					
12	S		S		I			F		O								H	
13	E	N	T	I	T	Y			14	G	U	N	15	G	H			O	
	A						U		16	P		N		E				P	
17	F	A	18	U	L	T	F	I	N	D	I	N	G						
	A		P		I			L			I		U			19	V		
20	R	E	P	R	O	O	F				21	N	A	I	V	E			
	E		E		N		E				G		N					N	
22	R	U	D	E			23	P	R	O	S	P	E	C	T				

## Answers to Kids Quiz on page 30

1. Downing Street (Number 10)
2. Florence Nightingale
3. Woody
4. Egypt
5. Pisa
6. Big Ben
7. 1000
8. Honey
9. Hogwarts
10. Humpty Dumpty

## Website of the Month

Your editors present a quirky, interesting, surprising or who-knows-what web site that may be of interest. Hand-curated by your intrepid cybernaut navigators Chris and Stephen 😊

<https://butterfly-conservation.org/>

See what you can do to help butterflies, moths and their environment. Here's a rare one (a Jersey Tiger) that we spotted last month!



## Oven temperature conversions

Centigrade	Farenheit	Gas Mark
140°C	275°F	1
150°C	300°F	2
160°C	325°F	3
180°C	350°F	4
190°C	375°F	5
200°C	400°F	6
220°C	425°F	7
230°C	450°F	8
240°C	475°F	9

## Mobile Library dates & times

Dates	Location	Stop name	Arrives	Leaves
<b>2024</b>  <b>18th September</b> 9th October 30th October 20th November 11th December	Ulting	Doe's Corner	9:40	9:55
	Ulting	Ulting Lane/Water Co. Houses	10:00	10:15
	Heybridge	Colne House	10:45	11:15
	Heybridge	Coopers Avenue	11:20	11:50
	Heybridge Basin	Bus Stop	12:00	12:15
	Heybridge Basin	Daisy Meadows car park	12:20	12:50
	<b>Goldhanger</b>	<b>Village Hall</b>	<b>13:10</b>	<b>13:40</b>
	Heybridge	Plantation Hall	14:45	15:15
	Langford	Little Hills	15:30	16:00

### What goes where?



### Essex Police Contacts

#### Call 999 (emergency) if:

- A crime is in progress
- Person suspected of a crime nearby
- There is a danger to life
- Violence is being used or threatened

**Call 101 for any non-emergency contact with the Police.** This number covers all of England and Wales but you get the option to speak to Essex Police. Alternatively you can report a crime and more at <https://www.essex.police.uk/do-it-online/>

#### The Goldhanger Neighbourhood Watch

email system is free & confidential. It sends emails with information & advice on current issues in the village. Contact [goldhangernw@outlook.com](mailto:goldhangernw@outlook.com) for more information.

### Crimestoppers

0800 555 111

You can contact them anonymously with information about crime

**Our collection day is Friday;  
Landfill and Recycling on alternate weeks.**

# BUS TIMETABLE

## Monday to Friday

<b>95 Tollesbury to Maldon</b>	Hedingham Omnibus			
Tollesbury, adj The Square	09:20	11:30	14:30	16:05
Tolleshunt D'Arcy The Red Lion (near)	09:25	11:35	14:35	16:10
<b>Goldhanger House (o/s)</b>	<b>09:30</b>	<b>11:40</b>	<b>14:40</b>	<b>16:15</b>
Heybridge, adj Osea Road	09:35	11:45	14:45	16:20
Heybridge, o/s Mill Beach Hotel	09:37	11:47	14:47	16:22
Heybridge, opp Church	09:40	11:50	14:50	16:25
Maldon Tesco Store (Stop 1)	09:43	11:53	14:53	16:28
Maldon, o/s The Swan Hotel	09:46	11:56	14:56	16:31
Maldon, o/s Blackwater Leisure Centre	09:50	12:00	15:00	16:35
Maldon Morrisons Wycke Hill (entrance)	09:55	12:05	15:05	16:40

<b>95 Maldon to Tollesbury</b>	Hedingham Omnibus			
Maldon Morrisons Wycke Hill (entrance)	08:25	10:40	12:50	16:45
Maldon, opp Blackwater Leisure Centre	08:30	10:45	12:55	16:50
Maldon, opp The Swan Hotel	08:35	10:50	13:00	16:55
Maldon Tesco Store (Stop 1)	08:39	10:54	13:04	16:59
Heybridge, o/s Church	08:43	10:58	13:08	17:03
Heybridge, opp Mill Beach Hotel	08:46	11:01	13:11	17:06
Heybridge, opp Osea Road	08:48	11:03	13:13	17:08
<b>Goldhanger House (opp)</b>	<b>08:53</b>	<b>11:08</b>	<b>13:18</b>	<b>17:13</b>
Tolleshunt D'Arcy, opp The Red Lion	08:58	11:13	13:23	17:18
Tollesbury, adj The Square	09:03	11:18	13:28	17:23

### The Blackwater Link - 90

Runs from Morrisons in Maldon to Witham Ebenezer Close (passes Witham Station)  
Take the 95 to Bentalls and pick up the 90 there.

For more details contact 01702-541511

# BUS TIMETABLE

## Saturday

<b>95 Tollesbury to Maldon</b>	Hedingham Omnibus			
Tollesbury, adj The Square	09:00	11:00	13:00	14:40
Tolleshunt D'Arcy The Red Lion (near)	09:05	11:05	13:05	14:45
<b>Goldhanger House (o/s)</b>	<b>09:10</b>	<b>11:10</b>	<b>13:10</b>	<b>14:50</b>
Heybridge, adj Osea Road	09:15	11:15	13:15	14:55
Heybridge, o/s Mill Beach Hotel	09:17	11:17	13:17	14:57
Heybridge, opp Church	09:20	11:20	13:20	15:00
Maldon Tesco Store (Stop 1)	09:23	11:23	13:23	15:03
Maldon, o/s The Swan Hotel	09:26	11:26	13:26	15:06
Maldon, o/s Blackwater Leisure Centre	09:30	11:30	13:30	15:10
Maldon Morrisons Wycke Hill (entrance)	09:35	11:35	13:35	15:15

<b>95 Maldon to Tollesbury</b>	Hedingham Omnibus			
Maldon Morrisons Wycke Hill (entrance)	09:55	11:55	13:55	16:25
Maldon, opp Blackwater Leisure Centre	10:00	12:00	14:00	16:30
Maldon, opp The Swan Hotel	10:05	12:05	14:05	16:35
Maldon Tesco Store (Stop 1)	10:10	12:10	14:10	16:40
Heybridge, o/s Church	10:15	12:15	14:15	16:45
Heybridge, opp Mill Beach Hotel	10:17	12:17	14:17	16:47
Heybridge, opp Osea Road	10:19	12:19	14:19	16:49
<b>Goldhanger House (opp)</b>	<b>10:25</b>	<b>12:25</b>	<b>14:25</b>	<b>16:55</b>
Tolleshunt D'Arcy, opp The Red Lion	10:30	12:30	14:30	17:00
Tollesbury, adj The Square	10:35	12:35	14:35	17:05

### Hedingham Omnibuses:

01206 769778  
[www.hedingham.co.uk](http://www.hedingham.co.uk)

### Stephenson's Buses:

For the Blackwater Link - 90  
01702 541511 (0900-1730)  
[www.stephensonsofessex.com](http://www.stephensonsofessex.com)



## HEALTH

Blackwater Medical Centre	876760
Longfield Medical Centre	876433
Tollesbury Surgery	869204
St Peter's Hospital <i>NHS</i> (Maldon - no A&E)	725323
Broomfield Hospital <i>NHS</i> (Chelmsford, has A&E)	01245 362000
Colchester General Hospital <i>NHS</i> (has A&E)	01206 747474
NHS Advice (non-emergency)	111

Oooh, I get some  
plonkers ringing me up!



## LOCAL PUBLIC SERVICES

Maldon District Council	854477
Job Centre Chelmsford	0845 606 0234
Local Police (non-emergency)	101 ( <i>puts you through to Essex Police</i> )

## HELP & ADVICE

Maldon Citizens Advice Bureau	841195
Social Services	08457 430 430
Victim Support (charity for victims of crime)	08 08 16 89 111
Women's Aid	01245 493114
Alcoholics Anonymous	01904 644026
Childline	0800 1111
Universal Credit Helpline	0800 328 5644
Salvation Army	853942
Gingerbread (Charity for single parents)	01245 352708
Outhouse East (LGBT Charity)	0345 123 23 88 ( <i>7pm-10pm weekdays</i> )
National Domestic Abuse/Violence Helpline	0808 2000 247 ( <i>open 24 hrs, every day</i> )

## ELECTRICITY & WATER

UK Power Networks	0800 783 8838
Anglian Water (Sewage flooding)	03457 145 145
Essex & Suffolk Water	0345 782 0999

## TRAVEL

National Rail Enquiries	0845 748 4950
Heddingham Omnibuses Ltd	01206 769778 or 564581
Regal Busways	01245 249001
First Eastern National Buses	0845 678 2977
Bus Station Chelmsford	<b>01245 263859</b>
Bus Station Colchester	01206 572478
Stansted Airport	0844 335 1803

## SPORTS CENTRES

Blackwater Leisure Centre	851898
Witham Leisure Centre	0845 260 1535