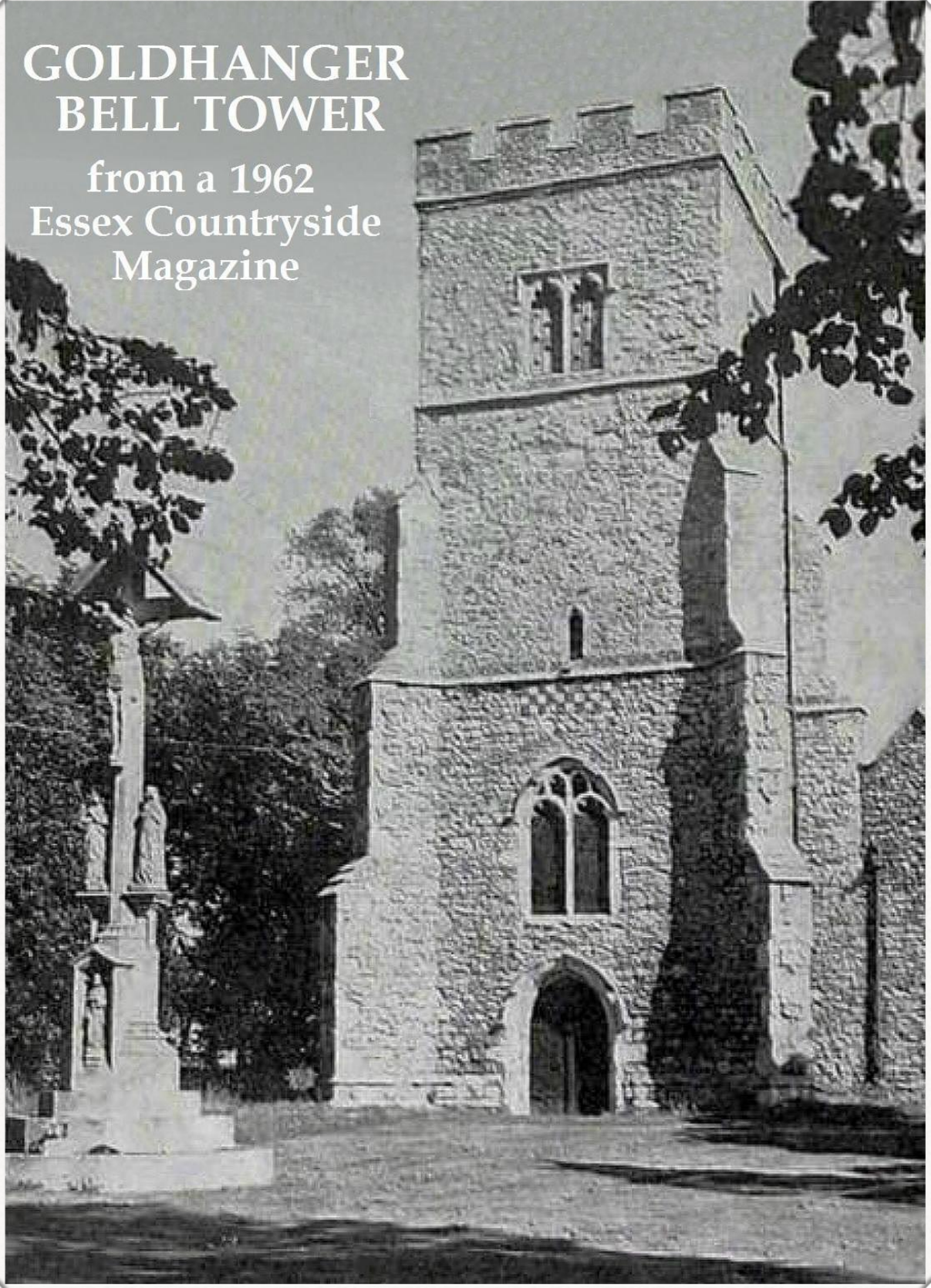


GOLDHANGER BELL TOWER

from a 1962
Essex Countryside
Magazine



128 Years of Goldhanger Parish Magazine

There has been a Parish Magazine since 1895 when the Revd. Frederick Gardner started it shortly after being appointed Rector at Goldhanger. In all those years there have only been a few breaks in publication, most notably during both World Wars.

All articles (ideally in PDF or plain text) to be submitted by midnight on the 13th of December, and advertising (including For Sale and Wanted) by midnight on the 11th of December Please contact the editors if you have any questions about your article.

Magazine Editors: Stephen & Chris 788369
parishmag@goldhanger.org.uk

Advertising (for Emma advertising@goldhanger.org.uk
Magazine & Goldhanger
Website)

For Sale or Wanted - To list your items in the magazine the minimum donation is £1 per advert. If you would like to donate more it would always be welcome.

Please note: We cannot guarantee the delivery date of your magazine. Please bear this in mind when advertising functions at the beginning of the month.

This magazine is run entirely by volunteers and relies on donations and advertising to fund it. It costs approximately £1 per issue to produce. We print about 350 copies each month.

Donations can be made at any time. Cheques made payable to **Goldhanger Parish Magazine** please - or you can go to the Goldhanger website and make a donation online.

Current and previous issues of the magazine are available in glorious technicolour from the Goldhanger website at: www.goldhanger.org.uk.

Goldhanger Correspondent

If you have any news articles about the village for inclusion in the Maldon & Burnham Standard and the Essex Chronicle.

Contact:

Kaye Shrubb

01621 788639

07891 677157

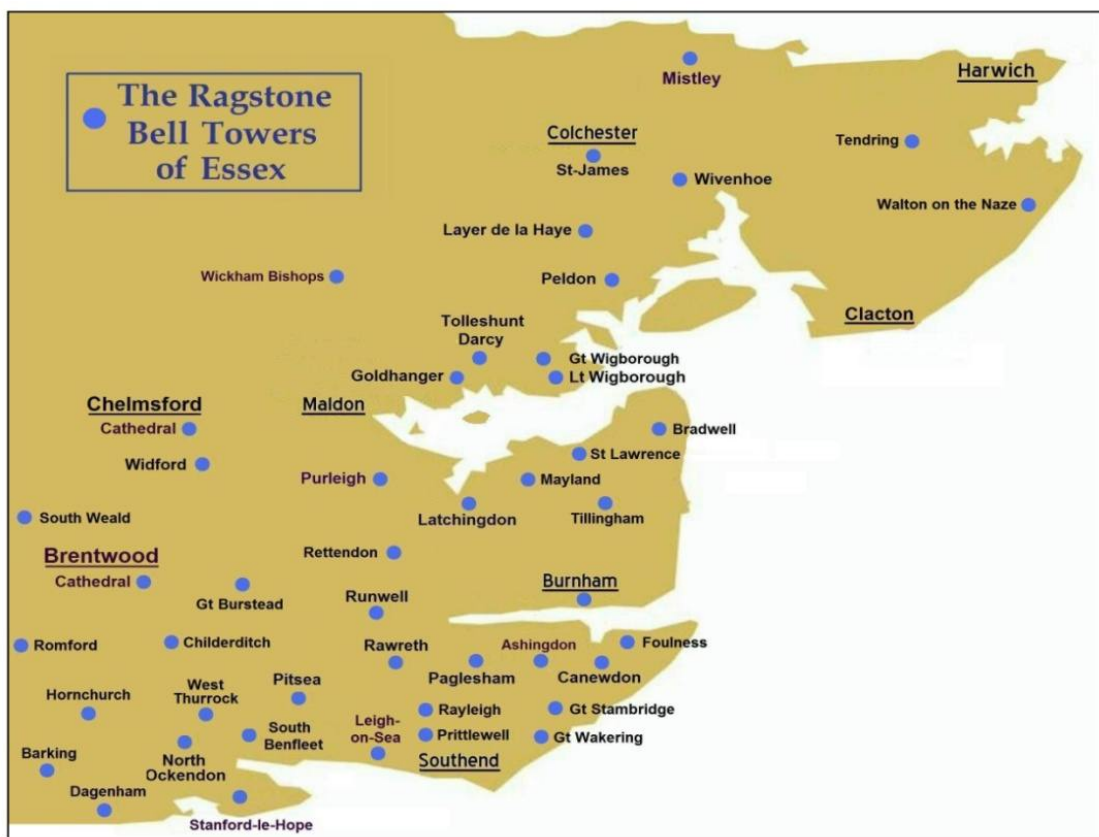
kaye.shrubb1937@gmail.com



The construction of St. Peter's Bell Tower

Have you ever wondered how the Bell Tower came to be built of solid stone? - particularly as the rest of the Church is built with a mixture of flint and softer materials, and with no other stone buildings for miles around.

As there were no stone quarries in Essex the tower was built using "Kentish Ragstone" in the 1400s and the stone came from near Maidstone using flat bottomed barges similar to those at Maldon today. There are a remarkable number of similar church towers built with this stone in the estuaries all along the Essex coast. To date over 40 have been identified and some are surprisingly similar in appearance to St Peter's. This map shows the locations...



At a time when there were threats of invasions from European countries many of these towers weren't built just to hold bells, they were also built as observation towers, for fortification, signalling (with flags, flame beacons and a bell), to keep local time (with sundials and large pendulum clocks) and not least to impress. Imagine St. Peter's Church without a tower or any bells, especially at Christmas.

For more information search for: *Goldhanger past ragstone*

www.churchside1.plus.com/Goldhanger-past/Tower.htm

www.churchside1.plus.com/Goldhanger-past/Ragstone-Bell-Towers.htm

this has photos of all of the ragstone towers found

David Newman

Goldhanger Village Hall



Now a newly modernised venue for birthday parties, discos, children's parties, quiz nights & theme nights.

Comfortably seats 80 people using our chairs and tables - you are welcome to bring your own enabling you to seat more.

See [Village Hall Calendar](#) for more details of events.



Gentle Yoga every Monday 7-8pm

Nikki Myers 07963 785718, youtimeyoga@live.co.uk

Ladies Kickboxing every Tuesday 6-7pm

Gemma, 07531 360562, gemma@muayfitness.co.uk

Karate every Thursday 6-8pm

Parish Council second Wednesday of the month 7:30-9:30pm

Art Club second Thursday of the month 2-4pm

Catherine 01621 788488, <http://goldhangerartclub.co.uk>

Film Club third Wednesday of the month (*except July and August*), doors open 7pm, film 7:30pm

see advert for details

Village Hall Bookings

Contact Jackie Christy on 788432 or:
<http://www.goldhangervillagehall.co.uk/bookings/#form>

Web: www.goldhangervillagehall.co.uk

Facebook: [Goldhanger Village Hall](#)

Twitter: [@Goldhanger_VH](#)

Hire charges		Goldhanger Resident Rate (per hour)	General Rate (per hour)
Monday-Friday	9.00 -18.00	£12	£14
	18.00 - 23.00	£17	£20
Saturday-Sunday	9.00 - 18.00	£17	£20
	18.00 - 23.00	£22	£27

Community Page

Goldhanger Sailing Club www.goldhangersailingclub.org.uk

All types of sailing, including sailboarding and canoeing, with racing organised on Sundays during the season, there is something for everyone who loves the water.

Stamps for the Hospice

Your used stamps can be dropped in to the Hospice shops in Maldon or the Bentalls Centre in Heybridge.

Maldon District Council Monthly Surgeries

1st Saturday of the month at the Queens Head Tolleshunt D'Arcy. from 12 noon to 1pm.

Meet Tolleshunt D'arcy and Tollesbury Ward Councillors and/or raise issues or problems relating to local council matters.

Bellringing www.bellringing.org/learntoring/

Every Wednesday 7:30pm - 9:30pm and for services on Sundays.

Newcomers welcome.

Contact Andrew Kelso 788284 or email arckelso@mac.com.

Mother's Union

4th Friday of each month at 1.45pm at Honywood Hall, Hall Road, Great Totham.

Coffee mornings

Community Room at St. Peter's Church on Tuesdays between 11am and 12noon. Everyone is welcome. Pop along, bring your friends, and have a chat over coffee.

Wednesday lunchtime Picnic Service

For Parents and toddlers. Last Wednesday of the month in term time. St. Peter's Church.

Shanties in the Pub

Billiards room at the Chequers every other Tuesday (from 12th October) from 7pm.

Just join in the responses or take a lead as you wish. Ooo-Aaaar!



Pink recycling and green waste food bags

These can be collected 15 minutes before each Parish Council meeting.
Parish Council meetings are usually every 2nd Wednesday of the month and start at 7.30pm

(Check the Village Hall website or notice board in the square for any changes to usual dates.)

These bags are also available at other locations like the library, and information is on the Maldon District Website.

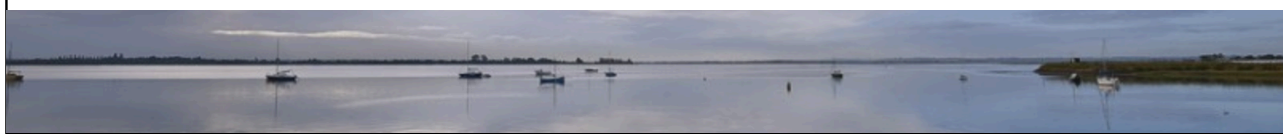
Many thanks
Julia Bourn - GPC Chair



Tide Times

<https://www.goldhanger.org.uk/index.html>

<https://www.tidetimes.co.uk/maldon-tide-times>



Bakers of Danbury Ltd

Established 1878

Celebrating 140 years

CONSERVATION / RESTORATION / NEW BUILDS

Tel: 01245 225876

Fax: 01245 226821

Web: bakersofdanbury.co.uk

Latest News: bakersofdanbury.co.uk/news

Registered in England at Eves Corner, Danbury, Essex CM3 4QB No. 12199448



CHRISTMAS



Saturday 2nd December

GOLDHANGER VILLAGE HALL



Doors open 7.00pm



Eyes down 7.30pm

FUN FOR ALL THE FAMILY

Bring your own drinks/ glasses, nibbles & dobbers!

Refreshments will be served in the interval

GOLDHANGER PARISH COUNCIL

Notes of the meeting held on the 8th Nov 2023. Full minutes can be viewed on the website or village noticeboard once they have been approved at the next Parish Council Meeting.

www.parish-council.goldhanger.org.uk

clerk.gpc@outlook.com

Planning Applications

23/00520 Bobbets Hole Bakers Green

Demolish two existing dilapidated garages and replace with new garage/workshop for domestic use

Supported by GPC

23/00975 30 Fish Street

Proposed first floor rear extension to go above existing ground floor. Proposed log burner flue to go in place of former chimney

Objection – see MDC Planning Portal for objections

Decisions

23/00835 37 Fish Street TPO 4/21 T1 Sycamore – Approved by MDC

Appeal Ref 3309957 Land adjacent to 15 Fish Street – Appeal Dismissed

Other Planning issues

23/00830 Land off Head Street for 25 houses

The local MP had visited the site on the 11th Oct 23 and met with some Parish Council members to understand more fully their issues and had received various letters from residents. She also wrote to Anglian Water regarding drainage issues, who in turn had offered to meet with the parish council.

Chairmans Announcements

Articles had been posted on social media regarding tyre safety, household support fund and heritage talks

Correspondence

A letter from a resident had been received regarding cabling that had not been routed underground, the Parish Council would respond to this stating that they had no influence over this

Playing Field and Play area

Hedge cutting had been completed

Highway Matters and Public Right of Way

Parking – there had been two instances of poor parking reported on social media recently outside the nursery which allegedly had caused issues for refuse lorries and residents

Highways survey had recently been completed

Rubbish had been removed from Hall Estate Garages and a general inspection and tidy up of the area is being carried out by MDC

Defibrillators -New sets of replacement pads for the defibrillator were to be ordered

Notification from NALC regarding the 23/24 Local Government Services Pay agreement – the agreed award was a flat rate payment of £1925 (pro rated for part time workers)

Three quotes had been received for the 23/24 Playground Inspection. It was agreed to instruct Wicksteed to commence the inspection at a cost of £132

It was agreed to purchase a poppy wreath for Remembrance Day at a cost of £25

Next Meeting 13th Dec – at the earlier time of 6.30pm



Goldhanger Church Services

Sunday 3rd December Advent 1

9.30am Parish Communion (CW)

Sunday 11th December Advent 2

10.00am Family service

6.30pm A candlelit service of Nine Lessons and Carols

Sunday 17th December Advent 3

9.30am Parish Communion (BCP)

Christmas Eve

9.30am Morning Prayer

4.00pm Christingle and Crib Service

Donations invited for the work of the Children's Society.

10.00pm Midnight Mass

Christmas Day

10.00am Morning Prayer

Sunday 31st December Christmas 1

11.00am Benefice Service at Tolleshunt D'Arcy

No service at Goldhanger

On-line Sunday services can be found at:

<https://www.churchofengland.org/news-and-media/church-online/weekly-online-services>

Morning Prayer on YouTube on Wednesdays and Fridays both at 10.00am.

Jo Lacey has started offering Evening Prayer once a month on YouTube.

<https://www.achurchnearyou.com/church/6651/> or

<https://www.achurchnearyou.com/church/6657>

Weekday Holy Communion Services

Weekday Holy Communion service from The Book of Common Prayer

Every Wednesday at St Nicholas, Tolleshunt D'Arcy at 10.00am

And every Saturday at All Saints, Little Totham at 5.30pm

Please get in touch with Lizzie Armour or the churchwardens if you are considering baptism for yourself or your children, confirmation, and weddings Please contact Rev'd Tracey for funeral arrangements.

Parish Prayers

If you would like someone, an event or concern included in church prayers please contact Kim Evans or George Bunting. Votive candles are lit at Sunday Services.

Raise free donations for Goldhanger church through Easyfundraising

All you need to do is:

1. Go to <https://www.easyfundraising.org.uk/causes/stpeterschurchgoldhanger> and join for free.
2. Every time you shop online, log in to www.easyfundraising.org.uk first to find the retailer you want and start shopping.
3. After you've made your purchase, the retailer will make a donation to the church at no extra cost to you whatsoever!

Thank you for your support. Please contact Lizzie Armour, for any queries or help.

St. Peter's Church Goldhanger

Priest in Charge of the Blackwater Benefice*	Reverend Tracey Caswell	07742 999 633 blackwaterbenefice@gmail.com
Associate Priests	Reverend Sue Godsmark	01621 891513 suegodsmark@aol.com
	Reverend Sarah Clare	07762 840905 / 01621 868819 sarahclare9@gmail.com
	Reverend Andrew Vince	01621 868415 andrew.vince15@gmail.com
Church Wardens:	Mr George Bunting	01621 929690 gvbunting@gmail.com
	Mrs B Abrey	
Benefice Administrator	Lizzie Armour	07908776750 office.blackwaterbenefice@gmail.com
(Please contact Lizzie if you wish to book, a wedding, baptism etc. She is available on Tuesday and Thursday mornings. Messages left at other times during the week will be responded to at regular intervals)		
Church flowers	Mrs Elaine Clark	788686 elaclark@me.com

* Goldhanger, Little Totham & Great Totham and Tollesbury, Salcott, Tolleshunt D'Arcy and Tolleshunt Major

St. Peter's Goldhanger website: www.st-peters-church.goldhanger.org.uk

Flags for December



**Sunday 24th &
Monday 25th
December**

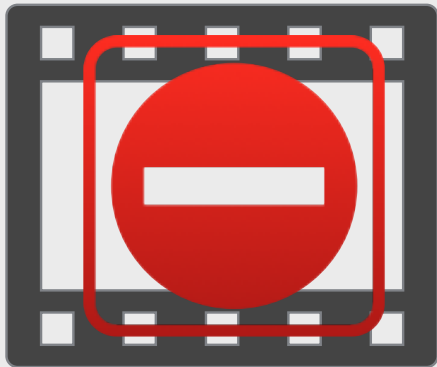


Christmas

Message From Revd Tracey

It is with sadness and happiness, in equal measure, that I announce I will be leaving the Blackwater Benefice next year. I will be taking up a new position as Rector of the Claydon Benefice in Suffolk. My last working day in this Benefice will be Wednesday 31st January.

I have thoroughly enjoyed my time in the Blackwater Benefice and will be very sorry to leave you. Please be assured of my ongoing prayers for you all.



Please Note:

There is no film club
in December.



Ministry Team Christmas message

It's early November as I write. But today, as I practised Silent Night with St Mary's Handbell Ringers, I felt the first stirrings of a Christmas spirit.

How does the 'Christmas spirit' affect you? Does it make you feel happy, affectionate, generous? Or does it make you anxious, stressed, exhausted? Christmas is usually 'sold' to us as a time of parties and plenty. But the reality for many people is far from that, specially now with the cost of living crisis in its second year. And Christmas can be particularly hard for those who are grieving, or whose loved ones have previously died during the festive season, and whose absence is more keenly felt than ever. [We have a Light up a Life service on 13 December in St Mary's Tollesbury, specifically to remember those loved ones.]

How might we celebrate the joy of Christmas whilst having empathy and compassion for those who are struggling?

Well, if we choose to focus on the actual events behind the Christmas celebrations, we find a story of humble simplicity, wonder, love and hope. At its heart is a baby, born over 2000 years ago, at a time of political unrest in a country in the Middle East - a country that is sadly once again in turmoil. It also involves a young woman, obedient to God; a faithful man; a foreign ruler causing havoc and misery in people's lives; and ordinary people looking for hope. That child grew up to be Jesus Christ, the Son of God, who taught us to love each other, selflessly; not to judge each other; and to care for the lost, the last and the least.

Recalling this story reminds us what's truly at the centre of Christmas, and the teachings of Jesus are as relevant today as ever. We've seen much selfless kindness and generosity expressed within our communities during the worst of the Covid years. This year, in Tollesbury, we again encourage you to do the **Reverse Advent Calendar** box if you can, gathering daily an item of non-perishable food/clothing/toiletries suitable for the homeless. They will be taken to Beacon House in the New Year. Other parishes might consider collecting too. I always bless each item as I place it in my box, which helps me concentrate on those less fortunate than I am.

Jesus tells us that 'it is better to give than to receive', and most of us will recognise the warm glow we feel when offering a present to someone. But our gifts needn't be materially expensive. Sometimes all people need is the gift of time, attention, and kindness.

Maybe this year we can try intentionally stepping away from the frenetic activities and materialism the world promotes and instead embrace a simpler, calmer approach as we recall the wonder and joy of that first Christmas in Bethlehem.

I do hope you can join us at one of the many services on offer in the Benefice over Christmas. What better way to drive away the darkness in our lives than welcoming Jesus, 'the light of the world', into our homes.

I wish you all a blessed, hopeful and Jesus-filled Christmas. Reverend Sarah Clare

The Chequers Inn Christmas Carols & Turkey Sandwiches



Sunday 17th December 2023 Arrival from 7.00pm

To start singing at 7.30pm.

Turkey sandwiches will be served halfway through the evening.

Come & join us for our fantastic evening of Carol singing & festive cheer.

Free Admission.

Mulled wine will also be available to purchase.

Dom & TheTeam look forward to seeing you all there.

The Chequers' Inn New Year's Eve - Sunday 31st December 2023

The pub will open at 8.00pm and be open until late.

Lee Probert playing live from 9.00pm.

There will be a buffet provided around 9.45.

Tickets are £10.00 per person – Young people of 12 years old or over are welcome.

Please email chequersgoldhang@aol.com or call 01621 788203 to book your tickets.



A.G. Smith

Est. 1912

Memorial Stonemasons

- Personal hand carved designs
- New memorials on display in showroom
- Additional inscriptions
- Cleaning & Restoration
- Free no obligation quotations

N.A.M.M.
Register of Qualified Memorial Fixers

BRAMM
British Register of Accredited
Memorial Masons

agsmithfunerals.co.uk 01621 502 262

LOCALLY HAND CARVED STONE MEMORIALS

Broadleaf Fencing



Call for a free estimate

01621 888621

07483 126957

For all your fencing needs www.broadleaffencing.co.uk

- ✓ Experienced
- ✓ Competitively priced
- ✓ Highly rated



bark



Supply and install fences & gates
Bespoke pergolas & decking
Fence & gate repairs
Paving & patios



A place to stay in Goldhanger

Ideal for visitors when you
haven't enough space.

1 double room with
bathroom available in Head
Street. via airbnb.co.uk



Greentouch Plastering Services

All aspects of plastering covered
including rendering, boarding,
skimming

No job too big or too small! Please
contact me for a free no obligation
quote.

Please contact
Robbie on
07424405036 or
01621 493644 for
further information.



A.G. Smith

Funeral Directors & Monumental Masons



- Private chapel of rest
- Mercedes Benz hearse & limousines
- 24 hour service
- Hand crafted memorials
- Home visits by appointment
- Prepayment funeral plans

Maldon – 01621 854 293

7 Spital Road, Maldon CM9 6DY

Southminster – 01621 774 557

44 Station Rd, Southminster CM0 7EW

agsmithfunerals.co.uk



Serving our local community since 1912

Scams

I do most of my shopping online. I am always on the lookout for a bargain, especially with the festive season coming up but I'm worried about scammers. What should I look for, to avoid getting caught out?

You're not alone, lots of people do their shopping online: it's convenient and can save you time. But as more and more of us move online, so do scammers, with their tactics becoming more sophisticated all the time.

While scams can be tricky to recognise there are always things you can look out for and steps you can take to protect yourself from falling foul to a scammer.

The golden rule to remember is that if it seems too good to be true then it probably is. This goes for products which are 'must-haves', are sold out at major retailers, or are heavily discounted.

If you're buying from a site you haven't used before, do some research before hitting buy. Find the company's return and refund policies so you know your rights if something goes wrong with your purchase. You should also look up the company's address, this can normally be found in the website's 'contact us' section and should have a street name, not just a post office box.

Take some time to see what other people have said about the website. Start with an internet search and look at different review websites, don't rely on reviews the company has put on its own website.

Be very wary of people contacting you out of the blue on social media or via text and email offering an item for sale or deal on something. Scammers will often ask you to pay in unusual ways, or put you under pressure to buy very quickly. For example, they'll ask you to send money through a transfer service like MoneyGram or Western Union or pay via vouchers.

If you do fall victim to a scam, firstly don't feel embarrassed or ashamed. Scammers are clever and regularly adapt their methods making them harder to spot. Anyone can get scammed.

Do report it as this alerts authorities to scammers' techniques and prevents others from being taken advantage of.

You can report a scam to:

- Citizens Advice Consumer Service: www.citizensadvice.org.uk or 0808 223 1133 or
- Action Fraud: www.actionfraud.police.uk 0300 123 2040.

If you've transferred money in the last 24 hours contact the police via the non-emergency number 101, but, if you feel unsafe, use 999. Always contact your bank to let them know you've transferred money.

**DOMESTIC APPLIANCE
REPAIRS**

Prompt and Reliable Service

Washing Machines—Dishwashers
Tumble Driers—Fridges & Freezers

NEW APPLIANCES SUPPLIED
AT COMPETITIVE PRICES

Also Large Stock of New & Used
Spare Parts

PLEASE RING ALAN TAYLOR
01621 773709

Mobile: 07885 483595

Family Run Business
Est. 20 yrs

>>> Could YOU be a Blood Runner? <<<



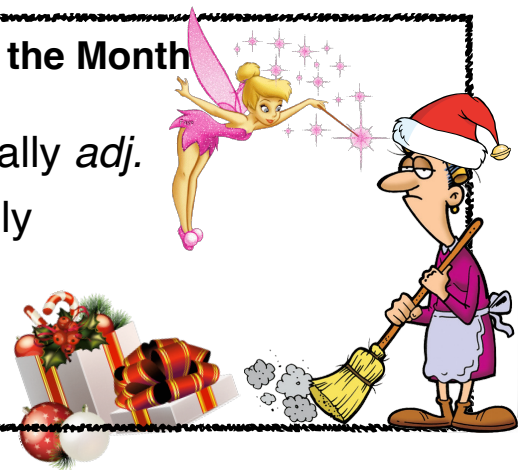
↓ See our article ↓

EssexVoluntaryBloodService.com

Word of the Month

Telestically *adj.*

Magically



B P A Kennedy
Plumbing and heating engineer

Gas and oil boiler servicing/repair

New boilers

Central heating up grades/repair

New radiators

Desludging available

New bathrooms

Ball valves etc

Telephone :home 01621 890039

mobile 07879643583



Save the Date!

Goldhanger Village Hall

Quiz Night

Saturday 10th February 2024

may have a Valentine's twist! ❤️

further details will be published in the January mag

Christmas Cyclamen

We shall be having Cyclamen in church this Christmas in memory of our loved ones .

Please let me know if you would like any ,with the name of the person to be remembered by the 14th December .

We are using a different supplier this year .They are £2.50 each .

You are welcome to bring your own into church .
labeled so that they can be returned to you or you
can collect them soon after Christmas .The smaller
ones survive better in the colder conditions of the
church

Elaine 788686

Rose Lodge

Church Street





Vend24 started out as your local 24 hour convenience machine selling fresh produce from butchers meats to wholesome vegetables and delicious pies, located at Millbeach seaside resort Maldon Essex.

Our love for good quality food has expanded even more that we now want everyone to be able to order and receive quick local delivery. Our delivery days will differ but we are trying to aim for Wednesday - Saturday.

Free local delivery and no minimum order

We can also quote for events where buffets would be required and have a wholesale price for restaurants and like minded businesses.

tomfullagar@hotmail.co.uk

07730 581446

www.vend24.co.uk



**This is the Goldhanger Coffee Morning, held every Tuesday in the Church Hall from 11am -12midday. Good to meet friends and neighbours and have a coffee, biscuit and chat....all for £1!! Why not come along and try it.
Pat Sargeant.**



CAROLS IN THE SQUARE 2023

Friday, 22nd December 2023

at 5.00 PM

The Square, Goldhanger

LED BY THE GOLDHANGER JUBILEE CHOIR





**Service of Nine Lessons and
Carols at St Peter's
Goldhanger will be held on
Sunday 10th December at
6.30pm – we do hope you will
join us!**

**Christingle Service at St
Peter's Goldhanger will be
held on Christmas Eve at
4pm – we do hope you will
join us!**

**Happy
New Year**

Best wishes to all our
Goldhanger friends,
Deb, Mark & family.
- xxx -

Wishing all in Goldhanger
a very Happy Christmas
and New Year xx

A happy CHRISTMAS
TO ALL IN GOLDHANGER
Clive and MAUREEN

Wishing all our Friends
in Goldhanger
a very Happy Christmas
and
New Year 2024

Happy Christmas
Everyone
Pam Pat

Happy Christmas
Love Shell, Stan + Mabel
xx

Merry Xmas to you
and all from Keith
Love ad hugs xx

J Woodward
(S pear tree)

Have a lovely Christmas
Garet + Gerry

Merry Christmas
to you all!
Love - The skeletons
& dogs x

"Always look on the bright side"
it is Christmas!!

Robert & Pat Long

Happy Christmas
everyone!
Love Judy & Stuart
xxxxx family xxxx

Very best wishes
to all in Goldhanger
Chris and Julie

Merry Christmas
to you all.
Barry.

Best wishes
Pamela Redwell

Wishing everyone
in Goldhanger
a fantastic
Christmas
The Don & children
Love all
Cheer up

Best wishes for
a very Happy Christmas
and Peaceful New Year
Deborah Griggs

To all our Goldhanger friends -
We wish you all a
Happy & healthy Christmas
New Year - love & hugs xx

Merry Christmas
to you all
love
Marian, Oliver
& Edward
xxx

Happy Christmas Goldhangers!
Lots of love.
Sue & Carol & Lotti xx

HAPPY
CHRISTMAS
love
Julia, Tony &
Family x

Happy
Christmas
everyone
Shore
Su, Keith
& Tide.

Wishing all our friends
a very merry Christmas
Love Marianne & Andrew
xx

Lots of
happiness to
you all
Barbara x

Festive Greetings
to you all
Julie & Martin
x

Happy Christmas
from
Hugh & Jenny.

Merry Xmas
to all
Julie
(Brish Clerk)

Merry Christmas
to Everyone!
Love from Anton,
Clare, Joyce &
Pam x

Happy Christmas
love from
Jackie, Daisy
& Jasper
x

Merry
Christmas
to all our
Goldhanger
friends
Love Liz & Holly x

Happy Christmas
everybody
God Bless
love
Michael & Cherry
xx

Merry Christmas to all
lots of love
Mark & Jules
xxx

Wishing everyone in The Village
a Merry Christmas & Happy
New Year
Best wishes
Sarah & Ian xx



Have a great
Christmas
all the best
for New Year
Love
Aria
xx

Happy Christmas
to all
Gwendolene
Dewar

Have a Merry
Christmas + here's
hoping for a
Happy New Year
Morag

Wishing All of
beautiful Goldhanger
a fabulous Xmas
Love Heather

Season's Greetings
have
Ray & Kim
xxx

Merry Christmas
Goldhanger
Dae

Christmas Greetings
from Chris & Stephen

Happy Christmas
everyone.
Love Maxine
xx

Wishing you all a very
Happy Christmas and
New Year
Love from Sheila & Malcolm

All the Very Best
for you all at Xmas.
Pau & Mici
x x

Christmas Wishes
Elaine & Anthony
x

Seasons Greetings
from Patsy & Martin
at the Mill House
xx

Merry Christmas
Goldhanger
Love Tina
xxx

Happy Christmas
Everyone
Love from
Steve & Lynn
& the boys

Seasons Greetings
to all
Catherine &
Adrian
x





A very Merry Christmas
from Lorraine & Ken

Happy Everything
to Everyone...
Love,

Clive

x
Floriana

Wishing you all a
wonderful Christmas
and a Happy New
Year! Lots of love
from Barbara, Paul
and family x

Wishing you a
Very happy Christmas
With love hizzie + Mike
Dunneigh and Noah 9000
x x.

Happy Christmas
and best wishes
for the New Year
from Ruth & Gerald.

Wishing a very
Happy Christmas
to all the Goldmanges
Residants!
Love, Greg
& Cheryl
-x-

Have a
great Christmas
and New Year
Alan

Wishing you all a very
merry Christmas & a
happy & healthy
New Year

Love from

Pauline & Gary Rose

Season's Greetings to you all!
Sarah, Zander and family xx

Wishing everyone
a very Merry Christmas
and a Happy New Year
from the
Peters family
(100 High Street)

Merry Christmas
& a very happy
New Year to all our
lovely neighbours &
friends.
Lots of love
Judy & Mike x



THE GREAT GOLDHANGER ADVENT WINDOW TRAIL 2023

FOLLOW THE TRAIL OF 24 WINDOWS UNIQUELY
DECORATED AND UNVEILED EACH EVENING DURING
DECEMBER – JUST LIKE AN ADVENT CALENDAR!



KICK OFF THE FESTIVE SEASON
AT THE LAUNCH PARTY!



FRIDAY 1ST DECEMBER
6.30 PM

GOLDHANGER VILLAGE HALL

MULLED WINE, HOT CHOCOLATE,
MINCE PIES, CAROL SINGING AND MORE!

TRAIL MAPS AVAILABLE TO BUY AT £1.00 EACH

COLLECT A STICKER AT ALL 24 WINDOWS AND BE
ADDED TO THE DRAW TO WIN A PRIZE!

ALL MONEY RAISED GOES TO THE VILLAGE HALL KITCHEN REFURBISHMENT FUND

THE GREAT GOLDHANGER ADVENT WINDOW TRAIL 2023



SEE THE FINAL WINDOW UNVEILED
AT ST PETER'S CHURCH



on
CHRISTMAS EVE
at 4.30 PM
(after The Christingle Service at 4pm)



Don't forget! Bring your Trail Map with all
24 stickers to be entered into the prize draw!

The draw will take place after the Christmas Eve window
has been unveiled.



All types of tree work undertaken including:

Crown Reductions and Crown Lifting
Shaping and Pruning of Trees
Tree Felling and Tree Removal
Root Removal and Stump Care
Hedge Cutting

All works are covered by £5,000,000 Public Liability
and completed by NPTC Qualified Tree Surgeons

Telephone: 01621 892932 Mobile: 07919 241412

Email: etmtreeservices@gmail.com



Is the home you rent from a private landlord in a poor state of repair?

Over the last few years, the number of private tenants seeking help from Maldon Citizens Advice has nearly tripled. Often enquiries are about disrepair.

“Your landlord is responsible for most major repairs to your home if you rent privately. This includes:

- the structure of the property, for example walls, roof, windows and doors
- sinks, baths, toilets
- pipes and wiring
- heating and hot water, for example the boiler
- the safety of gas and electrical appliances

You'll be responsible for minor repairs, for example changing fuses and light bulbs. You'll also have to fix anything you've damaged. You won't be responsible for repairing damage caused by other people, for example vandalism.

If your home is damp, your landlord might not be responsible. It depends on what type of damp it is - and what caused it.

Asking your landlord to make repairs

Write to your landlord as soon as you notice a problem. You could be held responsible if it gets worse. It's best to put it in writing - send it to your landlord and keep a copy yourself.

If a letting agent manages the property for your landlord, write to them and they should talk to your landlord. The letting agent will be responsible for making sure your landlord does the repairs.

If your landlord's responsible for the repairs, they should do them in a 'reasonable' amount of time. What counts as reasonable depends on the problem. For example, a broken boiler should be fixed sooner than a leaky tap.

Getting evidence

You should get evidence of the problem, for example:

- photos of the damage, particularly if the problem gets worse over time
- any letters, texts, emails or notes of any conversations between you and your landlord or letting agent
- receipts if you've had to replace damaged items
- letters from your GP if the problem has made you ill
- a copy of your tenancy agreement

Keep any evidence you've got - you might need it later if you have to take further action to get repairs done.

Unless it's an emergency, your landlord should give you at least 24 hours' written notice if they want to visit your home to see the damage or do repairs.

If your home isn't safe for you to live in

Your landlord has to make sure your home is fit for human habitation. This applies to most types of tenancy.

Your home might be unfit for human habitation if for example:

- it has a serious problem with damp or mould
- it gets much too hot or cold
- there are too many people living in it
- it's infested with pests like rats or cockroaches
- it doesn't have a safe water supply

It doesn't matter if the problem was there at the start of the tenancy or only appeared later.

Your landlord doesn't have to make sure your home's fit for human habitation if you caused the problem by:

- not looking after your home properly - for example not using the extractor fan after having a shower
- doing something unreasonable - for example leaving candles burning when you go out

If your landlord won't do the repairs

Keep paying your rent. If you don't, you'll get into rent arrears and your landlord might then try to evict you.

If the problem is affecting your health or safety

You can report your landlord to the Environmental Health department at your local council if your home is in a bad state of repair.

You should do this if your home is unsafe or making you ill. This could be, for example because of:

- a gas leak
- a broken step
- mould or damp
- mice or cockroaches

You'll need to send details of the problem in writing, for example when the problem started.

Your landlord could try to evict you if you complain. If you have an assured shorthold tenancy that started after 1 October 2015, you might have more protection against being evicted.

Your council should get back to you quickly if the problem is severe or if someone in your home is very young, ill or elderly"

If your landlord still won't fix the problem or if you would like more detailed advice, contact Maldon & District Citizens Advice via www.maldoncitizensadvice.org.uk or ring 01621 875774.

The Chequers Inn, Goldhanger



The Square, Goldhanger, Essex CM9 8AS

Telephone 01621 788203 Thechequersgoldhanger.co.uk

- Great Home Cooked Menu with Lots of Local Produce
 - Wonderful Selection of Cask Ales & Wines
 - Bar Billiards and Darts
 - Dogs Welcome
 - Great Hospitality and Friendly Service
 - Takeaway Food, Cakes, Coffees, Drinks
 - Monthly Charity Quiz
 - Real fires & Log Burner

Here at 'The Chequers' we're always pleased to be able to do what we do best – serve our guests with great food and drink in a great pub with a great atmosphere and great hospitality.

Dominic and The Team look forward to welcoming you to The Chequers Inn very soon!



MID ESSEX ELECTRICAL LTD

01621 212671

CALL GARETH TODAY FOR FREE A QUOTE

RELIABLE - CERTIFIED - INSURED

SMALL JOBS
MAINTENANCE AND REPAIRS
OUTSIDE LIGHTS
FAULT FINDING
HEATING
EXTRA SOCKETS
NEWBUILDS
REWIRES



NICEIC REGISTRATION NUMBER D610120



Keeping the county warm



Fuel Services

Contact BFS for prompt delivery of your domestic heating oil direct from our local Danbury Fuel Services depot. You'll find no better service, no better value.

T 01245 425251 www.bfsfuelservices.uk



D.J. Wait & Son

BUILDING CONTRACTORS

Your complete building service

***Fully Insured
Free Advice***

***Family Business
Free Estimates***

07742957773

01621 334357

djwaitandson@gmail.com



SH
SIMON HOULDING
EST. 1997

CURTAINS | UPHOLSTERY | BLINDS | SHUTTERS | INTERIOR DESIGN
QUALITY IN EVERYTHING WE DO
www.simonhoulding.co.uk | 01621 859 484 | 07990 972 676

Mannequin
INTERIORS
BY RUTH HOULDING

Extracts from the Goldhanger Millennium Calendar



STRAWBERRY PICKING AT GOLDHANGER
Starting at 4 am used to be worth an extra 6d. bonus



GOLDHANGER APPLE ORCHARDS
Up until the 1960s the village was surrounded by apple orchards. Now just one remains.

Parish Mag cover in colour

The cover photos on your Parish Mag are now in colour when you view them on the Goldhanger website (<https://www.goldhanger.org.uk/>).

Unfortunately we can't have them printed in colour as it would be too expensive.

Chelmsford Plumbing & Heating

Trustworthy family run business

All calls answered personally

Confirmed bookings given

*Boiler services, breakdowns, repairs

*New boilers and heating systems

*Plumbing repairs

*Gas, Oil, LPG and Electrical work

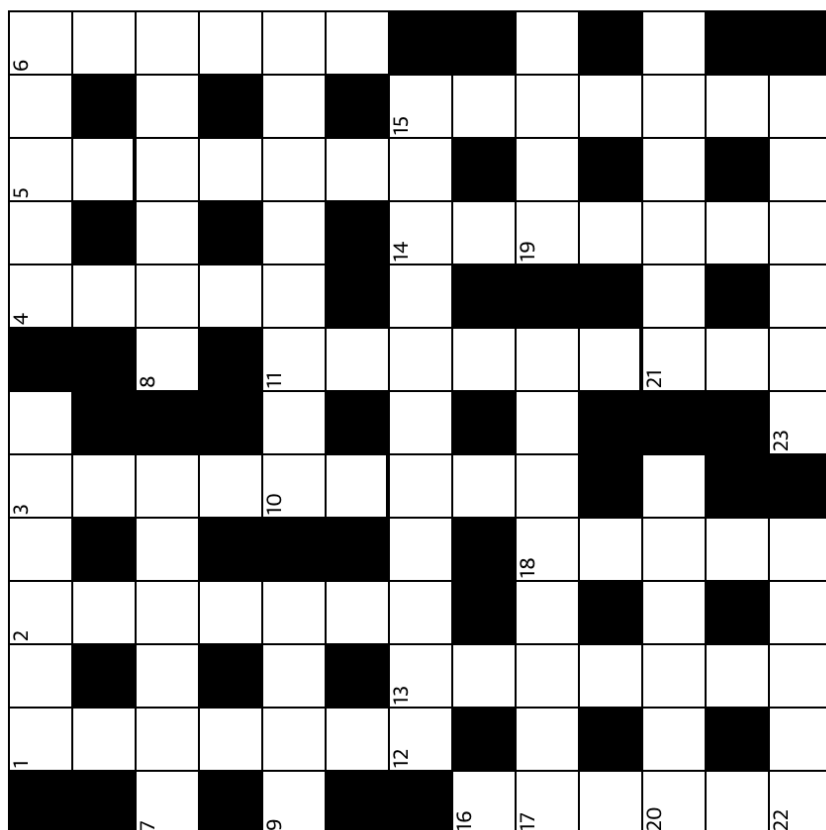
No job too small

Work covered by 12-month guarantee

01245 478588

Email: sales@chelmsfordplumbingandheating.co.uk
www.chelmsfordplumbingandheating.co.uk





Across

- 1 Frank (6)
- 4 Lift abruptly (5)
- 7 Turned sharply (6)
- 8 Inconsistent (6)
- 9 Branch of Islam (4)
- 10 No-show (8)
- 12 Russian port on the Sea of Japan (11)
- 17 Expensive and exclusive (8)
- 19 £25 (4)
- 20 Patterned with blooms (6)
- 21 Glazed cotton fabric (6)
- 22 Lifting device (5)
- 23 Deeply sad (6)

Down

- 1 Russian playwright, d. 1904 (7)
- 2 Buddhist bliss (7)
- 3 Black fluid used for drawing (6,3)
- 4 Thus (5)
- 5 Happening outside the living organism (2,5)
- 6 Where the setter may be found? (6)
- 11 Small, powerful vehicle (6,3)
- 13 Parody (7)
- 14 Wonderful - pizza choice (7)
- 15 Relating to motion (7)
- 16 Law forbidding going out (6)
- 18 Get to (5)

Answers next month

Online games and puzzles to keep you amused

Online games and puzzles: <https://www.games.co.uk/games/puzzle>

Online jigsaw puzzles: <https://www.jigsawplanet.com/>

Online brain teasers, maths puzzles, word games, sudokus and memory games: <https://www.mindgames.com/>



CHRISTMAS WORD SEARCH



O P R I N L I G G Q Q R G L U N H Z E F
C H Z Q E J A O R E I N D E E R I R L Q
M B M O L S Z T V W U P O B N D T T V V
N H N J O L L Y N U Y E N M I H C C E U
X P M N P P S F I A G K A C L Y V H S Z
D L A E H X C E L B S F P G C E T Q E G
Z O M N T H E D A Y S G N I T E E R G M
S D Z I R V T Q P S G S B W C C P W V Q
P U I Z O V A J A E O R U A C F S O G S
G R E H N X R L B P Y N N N H R S O I L
B N Z C S T B H J O M D P I M O A B V M
Y M I S T L E T O E Y R D E E S M C I U
G O C N O R L D K C O Q O N R T T W N B
W K Y Q C Z E J A G O V T D R Y S D G Q
L O R T K L C N I C G P N R Y L I N X S
J N X J I R E F B A V A P J E H R D C Z
X L W O N H T A E R W V I I L E H A Y E
W L R D G Z G Y L D J C G N X E C M B O
M Y A D I L O H L S U H J A W N Z A M J
I X P D B T V H S K M W S E L D N A C U

BELLS
CANDLES
CANDY CANE
CARDS
CELEBRATE
CHIMNEY
CHRISTMAS

RUDOLPH
SANTA
SEASON
SLEIGH
STOCKING
TREE
WREATH

ELVES
FROSTY
GIFT
GIVING
GREETINGS
HOLIDAY
JOLLY

JOY
MERRY
MISTLETOE
NOEL
NORTH POLE
REINDEER



Children's Pages

QUIZ

1. What type of animal does Santa use to pull his sleigh: a) Horse, b) Donkey, c) Reindeer?
2. What is the missing word from this famous Christmas song – O Little Town of... : a) Nazareth, b) Bethlehem, c) Jerusalem?
3. What is the name of Kristoff's reindeer in the Disney movie 'Frozen'?
4. How many doors would you open on an advent calendar before Christmas Day arrives?
5. In the famous Christmas song, what type of plant was Mummy kissing Santa Claus under?
6. What gifts did the three kings take to baby Jesus?
7. What is the missing word from this famous Christmas song: Ding Dong ... On High: a) Happily, b) Joyfully, c) Merrily?
8. Which Christmas song includes the lyrics: 'Dashing through the snow, in a one-horse open sleigh'?
9. What three small words are the laughter of Father Christmas?
10. According to the Christmas song, what colour is Rudolph's nose?

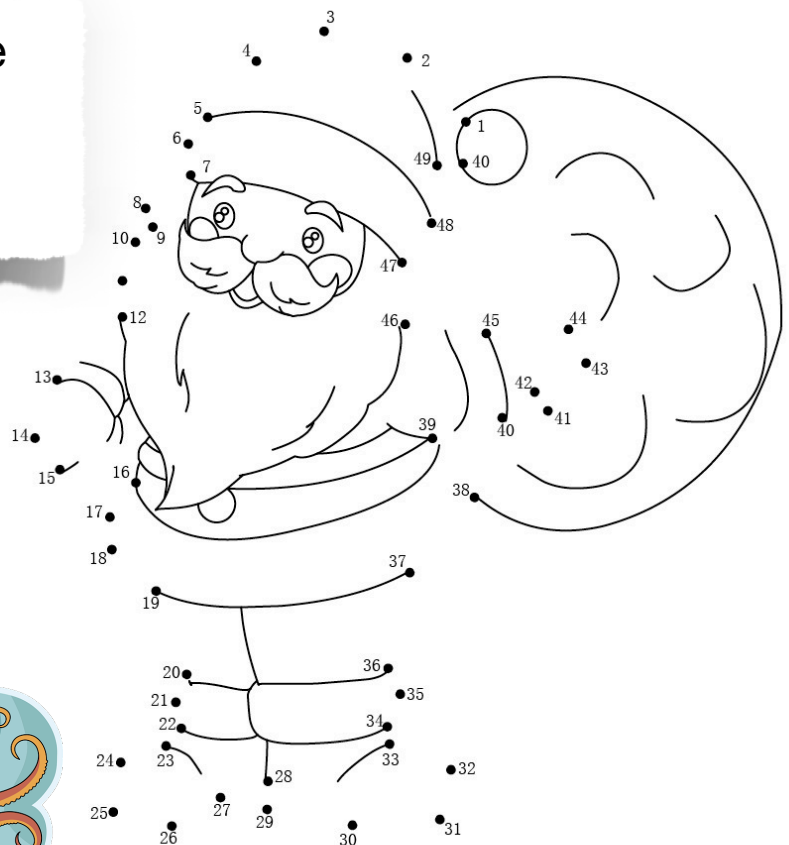
Answers on page 44

What do you call a fake noodle?

An Impasta.

DID YOU KNOW?

The majority of plant life is located in the oceans



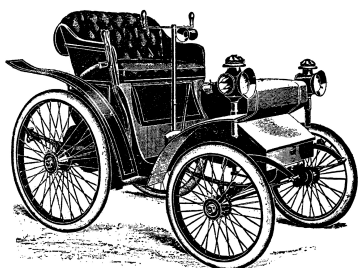
Children's Pages

(Adults can join in too)

Get your colouring pencils out



Gala Weekend 14th and 15th September 2024



The Goldhanger Classic Car Club is planning a Classic Car display in the Chequers Car Park on the Saturday and a Classic Car run starting mid-morning from the same location on the Sunday.

Dom and his Team at The Chequers are also organising a series of events over the same weekend.

In addition to the above, there will also be many other activities over the weekend.

As we get closer there will be more information, both in the Parish Magazine, on social media and elsewhere; in the meantime, please put the 14th and 15th September dates in your diaries....

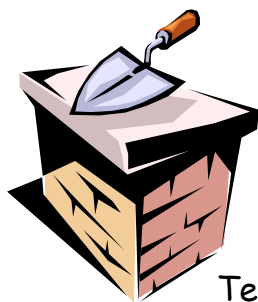


Answers to November crossword

1	P	2	O	P	3	P	Y	4	C	O	5	C	K		6	B		7	G
			K			A		H			A			8	B	R	I	O	
9	M	A	C	C	H	I	A	T	O				O					L	
		Y		Y		P			N		10	B	A	R	D				
11	I		12	L		13	S	P	R	I	14	G			D			E	
15	T	R	I	P	P	Y				16	P	R	I	S	O	N			
	C			Q		I						O			I			E	
17	H	A	U	N	C	18	H			19	T	I	D	D	L	Y			
	Y			I		20	Y	E	M	E	N			E			E		
21	F	A	D	E			B			E			22	I			23	P	
	E			A		24	C	R	I	T	E	R	I	O	N				
25	E	A	T	S			E			H			I			L			
	T			E		26	S	W	E	E	T	S	P	O	T				

Answers to November Sudoku

8	4	9	5	6	1	2	3	7
6	2	7	4	3	8	9	5	1
1	5	3	9	7	2	8	4	6
2	9	5	7	1	6	3	8	4
3	1	6	8	2	4	5	7	9
7	8	4	3	5	9	1	6	2
4	3	1	6	9	5	7	2	8
5	6	2	1	8	7	4	9	3
9	7	8	2	4	3	6	1	5



Owers & Son

Bricklaying & General Building

"Elvers" Fish Street Goldhanger
Maldon Essex CM9 8AT

Telephone: 01621 788272 Mobile: 07745 204587

E-Mail: mark.owers1@btinternet.com

**Brickwork, General Building, Plastering, Carpentry, Decorating, Fencing
Tiling, Garden Clearance, Roofing, Fascias & Soffits, Guttering & Cladding**

**OVER 30 YEARS EXPERIENCE
FULL PUBLIC LIABILITY - FREE ESTIMATES & ADVICE**

Carpets and Vinyls Seagrass, Sisal & Coir

**From Nic Lawrence
Your Local Fitter**

**Choose at Home
Re- fits also undertaken
No Job Too Small
Free Estimates
Very Reliable 25 Years Experience
01621 869344
07771 632028**

Recipe of the month

Bara Brith

Made using warm black tea, this traditional Welsh fruitcake is best when it's made a couple of days in advance.

Serves 10

Time Preparation - not long, cook 1 hour



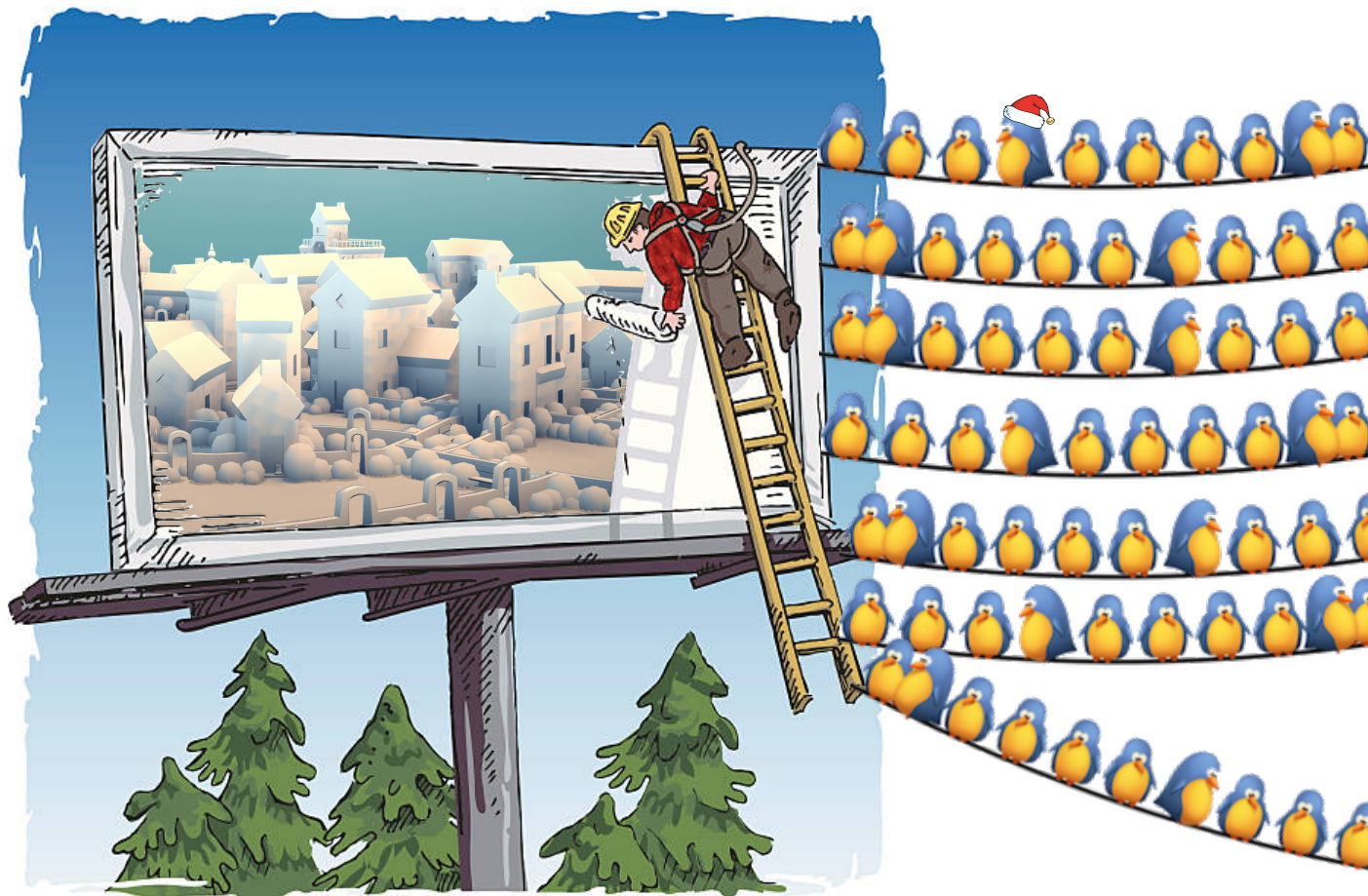
Ingredients

- 3 tea bags
- 100g dark brown sugar
- 1 medium egg, beaten
- 400g mixed fruit, such as sultanas, raisins & currants
- 250g self-raising flour
- 1 teaspoon mixed spice
- ½ teaspoon ground cinnamon

Method

1. Add 300ml of boiling water to the tea bags in a jug. You want the tea to be strong, but also still hot, so steep for about 5 minutes. Add the dried fruit to a bowl, then pour over the hot tea. Add the sugar, stir to dissolve, then leave to soak for at least 6 hours - it's best to do this bit the day before and allow it to steep overnight.
2. Heat the oven to 180C/gas 4 and line a 900g loaf tin with parchment. Stir the egg into soaked fruit (don't drain off the tea and mix to combine, then carefully fold in the flour and spices until no trace of white powder remains.
3. Pour the mix into the loaf tin and transfer to the oven.
4. Bake for 1 hour, or till the cake has risen and is cooked through (cover with foil after 30 minutes, to help prevent it drying out). Remove from the oven, transfer to a rack and allow to cook fully. Serve in slices, liberally buttered, alongside cups of tea.
5. The cake will keep for a week.





The magazine is available to download from the village website in glorious full colour - and you can click any links in it!

The current price list for greyscale printing in the magazine.

Page Size	Full Cost	Early payment rate	Six months	Per month rate
Full	£170	£160	£90	£16
Half	£100	£90	£55	£10
Quarter	£65	£55	£35	£7

Online adverts on our website remain at £15 for the year. Full colour adverts can be used and will link back to your own website.

For all advertising enquiries:
advertising@goldhanger.org.uk

Answers to quiz on page 38

1. c) Reindeer
2. b) Bethlehem
3. Sven
4. 24
5. Mistletoe
6. Gold, frankincense, myrrh
7. c) Merrily
8. Jingle Bells
9. Ho! Ho! Ho!
10. Red



The Treehouse

Counselling & Creative Therapy
For Children and Young People

Essex

Supportive & Creative Therapies for Children and Young People



**At Goldhanger
Village Hall**

To find out more visit:
www.treehouse-essex.co.uk
or Call Nadia on:
07904640922

Registered and Regulated
by the:



health & care
professions
council

Website of the Month

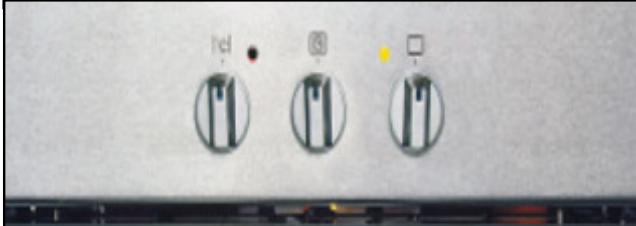
Your editors present a quirky, interesting, surprising or who-knows-what web site that may be of interest. Hand-curated by your intrepid cybernaut navigators Chris and Stephen 😊

<https://www.bbc.co.uk/articles/cz7x0lk9218o>

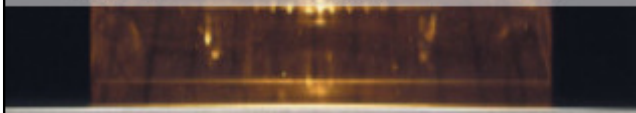
We all love Dr Who ... don't we? Well, it's celebrating 60 years so in case you've been hiding behind the sofa the whole time, here's some of what you've missed.



Oven temperature conversions



Centigrade	Farenheit	Gas Mark
140°C	275°F	1
150°C	300°F	2
160°C	325°F	3
180°C	350°F	4
190°C	375°F	5
200°C	400°F	6
220°C	425°F	7
230°C	450°F	8
240°C	475°F	9



Mobile Library dates & times

Dates	Location	Stop name	Arrives	Leaves
2023 20 December	Ulting	Doe's Corner	9:40	9:55
	Ulting	Ulting Lane/Water Co. Houses	10:00	10:15
	Heybridge	Colne House	10:45	11:15
	Heybridge	Coopers Avenue	11:20	11:50
	Heybridge Basin	Bus Stop	12:00	12:15
	Heybridge Basin	Daisy Meadows car park	12:20	12:50
	Goldhanger	Village Hall	13:10	13:40
	Heybridge	Plantation Hall	14:45	15:15
	Langford	Little Hills	15:30	16:00

What goes where?



**Our collection day is Friday;
Landfill and Recycling on alternate weeks.**

Essex Police Contacts

Call 999 (emergency) if:

- A crime is in progress
- Person suspected of a crime nearby
- There is a danger to life
- Violence is being used or threatened

Call 101 for any non-emergency contact with the Police. This number covers all of England and Wales but you get the option to speak to Essex Police. Alternatively you can report a crime and more at <https://www.essex.police.uk/do-it-online/>

The Goldhanger Neighbourhood Watch email system is free & confidential. It sends emails with information & advice on current issues in the village. Contact goldhangernw@outlook.com for more information.

Crimestoppers

0800 555 111

You can contact them anonymously with information about crime

Note the new times -
Very big thank you to
Pat O'Sullivan who let
us know.

BUS TIMETABLE

Monday to Friday

95 Tollesbury to Maldon	Hedingham Omnibus			
TOLLESBURY, adj The Square	09:20	11:30	14:30	16:05
TOLLESHUNT D'ARCY The Red Lion (near)	09:25	11:35	14:35	16:10
GOLDHANGER House (o/s)	09:30	11:40	14:40	16:15
HEYBRIDGE, adj Osea Road	09:35	11:45	14:45	16:20
HEYBRIDGE, o/s Mill Beach Hotel	09:37	11:47	14:47	16:22
HEYBRIDGE, opp Church	09:40	11:50	14:50	16:25
MALDON Tesco Store (Stop 1)	09:43	11:53	14:53	16:28
MALDON, o/s The Swan Hotel	09:46	11:56	14:56	16:31
MALDON, o/s Blackwater Leisure Centre	09:50	12:00	15:00	16:35
MALDON Morrisons Wycke Hill (entrance)	09:55	12:05	15:05	16:40
95 Maldon to Tollesbury	Hedingham Omnibus			
MALDON Morrisons Wycke Hill (entrance)	8:25	10:40	12:50	16:45
MALDON, opp Blackwater Leisure Centre	08:30	10:45	12:55	16:50
MALDON, opp The Swan Hotel	08:35	10:50	13:00	16:55
MALDON Tesco Store (Stop 1)	08:39	10:54	13:04	16:59
HEYBRIDGE, o/s Church	08:43	10:58	13:08	17:03
HEYBRIDGE, opp Mill Beach Hotel	08:46	11:01	13:11	17:06
HEYBRIDGE, opp Osea Road	08:48	11:03	13:13	17:08
GOLDHANGER House (opp)	08:53	11:08	13:18	17:13
TOLLESHUNT D'ARCY, opp The Red Lion	08:58	11:13	13:23	17:18
TOLLESBURY, adj The Square	09:03	11:18	13:28	17:23

The Blackwater Link - 90

Runs from Morrisons in Maldon to Witham Ebenezer Close (passes Witham Station)
Take the 95 to Bentalls and pick up the 90 there.

For more details contact 01702-541511

Note the new times -
Very big thank you to
Pat O'Sullivan who let
us know.

BUS TIMETABLE

Saturday

95 Tollesbury to Maldon	Hedingham Omnibus			
TOLLESBURY, adj The Square	09:00	11:00	13:00	14:40
TOLLESHUNT D'ARCY The Red Lion (near)	09:05	11:05	13:05	14:45
GOLDHANGER House (o/s)	09:10	11:10	13:10	14:50
HEYBRIDGE, adj Osea Road	09:15	11:15	13:15	14:55
HEYBRIDGE, o/s Mill Beach Hotel	09:17	11:17	13:17	14:57
HEYBRIDGE, opp Church	09:20	11:20	13:20	15:00
MALDON Tesco Store (Stop 1)	09:23	11:23	13:23	15:03
MALDON, o/s The Swan Hotel	09:26	11:26	13:26	15:06
MALDON, o/s Blackwater Leisure Centre	09:30	11:30	13:30	15:10
MALDON Morrisons Wycke Hill (entrance)	09:35	11:35	13:35	15:15
95 Maldon to Tollesbury	Hedingham Omnibus			
MALDON Morrisons Wycke Hill (entrance)	09:55	11:55	13:55	16:25
MALDON, opp Blackwater Leisure Centre	10:00	12:00	14:00	16:30
MALDON, opp The Swan Hotel	10:05	12:05	14:05	16:35
MALDON Tesco Store (Stop 1)	10:10	12:10	14:10	16:40
HEYBRIDGE, o/s Church	10:15	12:15	14:15	16:45
HEYBRIDGE, opp Mill Beach Hotel	10:17	12:17	14:17	16:47
HEYBRIDGE, opp Osea Road	10:19	12:19	14:19	16:49
GOLDHANGER House (opp)	10:25	12:25	14:25	16:55
TOLLESHUNT D'ARCY, opp The Red Lion	10:30	12:30	14:30	17:00
TOLLESBURY, adj The Square	10:35	12:35	14:35	17:05

Hedingham Omnibuses:

01206 769778
www.hedingham.co.uk

Stephenson's Buses:

For the Blackwater Link - 90
01702 541511 (0900-1730)
www.stephensonsofsex.com

HEALTH

Blackwater Medical Centre	876760
Longfield Medical Centre	876433
Tollesbury Surgery	869204
St Peter's Hospital <i>NHS</i> (Maldon - no A&E)	725323
Broomfield Hospital <i>NHS</i> (Chelmsford, has A&E)	01245 362000
Colchester General Hospital <i>NHS</i> (has A&E)	01206 747474
NHS Advice (non-emergency)	111

LOCAL PUBLIC SERVICES

Maldon District Council	854477
Job Centre Chelmsford	0845 606 0234
Local Police (non-emergency)	101 (<i>puts you through to Essex Police</i>)

HELP & ADVICE

Maldon Citizens Advice Bureau	841195
Social Services	08457 430 430
Victim Support (charity for victims of crime)	08 08 16 89 111
Women's Aid	01245 493114
Alcoholics Anonymous	01904 644026
Childline	0800 1111
Universal Credit Helpline	0800 328 5644
Salvation Army	853942
Gingerbread (Charity for single parents)	01245 352708
Outhouse East (LGBT Charity)	0345 123 23 88 (<i>7pm-10pm weekdays</i>)
National Domestic Abuse/Violence Helpline	0808 2000 247 (<i>open 24 hrs, every day</i>)

ELECTRICITY & WATER

UK Power Networks	0800 783 8838
Anglian Water (Sewage flooding)	03457 145 145
Essex & Suffolk Water	0345 782 0999

TRAVEL

National Rail Enquiries	0845 748 4950
Hedingham Omnibuses Ltd	01206 769778 or 564581
Regal Busways	01245 249001
First Eastern National Buses	0845 678 2977
Bus Station Chelmsford	01245 263859
Bus Station Colchester	01206 572478
Stansted Airport	0844 335 1803

SPORTS CENTRES

Blackwater Leisure Centre	851898
Witham Leisure Centre	0845 260 1535

