

GOLDHANGER PARISH MAGAZINE FEBRUARY 2022



Strawberry pickers in the 1930s

127 Years of Goldhanger Parish Magazine

There has been a Parish Magazine since 1895 when the Revd. Frederick Gardner started it shortly after being appointed Rector at Goldhanger. In all those years there have only been a few breaks in publication, most notably during both World Wars.

All articles (ideally in PDF or plain text) to be submitted by midnight on the 15th of the month, and advertising (including For Sale and Wanted) by midnight on the 13th of the month please.

Please contact the editors if you have any questions about your article.

Magazine Editors: Stephen & Chris 788369
parishmag@goldhanger.org.uk

Advertising (for Emma advertising@goldhanger.org.uk
Magazine & Goldhanger
Website)

For Sale or Wanted - To list your items in the magazine the minimum donation is £1 per advert. If you would like to donate more it would always be welcome.

Please note: We cannot guarantee the delivery date of your magazine. Please bear this in mind when advertising functions at the beginning of the month.

This magazine is run entirely by volunteers and relies on donations and advertising to fund it. It costs approximately £1 per issue to produce. We print about 350 copies each month.

Donations can be made at any time. Cheques made payable to **Goldhanger Parish Magazine** please - or you can go to the Goldhanger website and make a donation online.

Current and previous issues of the magazine are available in glorious technicolour from the Goldhanger website at: www.goldhanger.org.uk.

Goldhanger Correspondent

If you have any news articles about the village for inclusion in the Maldon & Burnham Standard and the Essex Chronicle.

Contact:

Kaye Shrubb

01621 788639

07891 677157

kaye.shrubb1937@gmail.com



Strawberry Picking in the early days at Bounds Farm

As the strawberry season starts again at Bounds Farm, it is perhaps timely to look back to the early days of Wilkin & Sons strawberry picking at Bounds Farm from the time when the company first bought the farm in 1923.

In those days there were no poly-tunnels and the strawberries were grown in the open and picking times were all important. In recognition of a slightly different climate to Tiptree and the need to spread the crop picking over as wide as possible time to maximise the use of staff and equipment in the factory, picking started first at Bounds in the season and as early as 3.45am.

From Maura Benham's 1985 book:

The Story of Tiptree Jam, the First Hundred Years

We have learnt that the fruit was taken to Tiptree by horse and wagon where boiling would start at 8.30 a.m. continue all day and into the night. However sometimes by 2 p.m. the factory would blow the hooter to stop the pickers, because they had as much fruit as they could handle for the day.

This picture is taken from a 1925 Essex newspaper article and had the caption: *Fruit Pickers at Goldhanger starting out for the fields at 3.45am by the aid of candle light.*

A Goldhanger resident has recently informed us that his grandmother, who is one of the ladies in this picture, told him that when they got to the fields the foreman had already placed lanterns at the ends of the rows to be picked and had also set candles in the ground along each row.



The same 1925 news article tells us that the number of people employed in the factory then was 219. The number of fruit pickers was 509 coming from Salcot, Wigborough, Peldon, Purleigh, Wickham Bishops, Heybridge and Goldhanger. The oldest fruit picker was aged 94 living in Fish St., Goldhanger, who came to pick "just for fun".

In the past many Goldhanger residents took part in this annual activity as the photo on this month's cover testifies. The ships laid up in the Estuary indicated that the photo was probably taken in the 1930s.

for more about the history of Bounds Farm go to:

www.churchside1.plus.com/Goldhanger-past
and search within it for: Bounds

Goldhanger Village Hall



Now a newly modernised venue for birthday parties, discos, children's parties, quiz nights & theme nights.

Comfortably seats 80 people using our chairs and tables - you are welcome to bring your own enabling you to seat more.

Events are starting up again but please check with the organiser or the Goldhanger Village Hall calendar on their website (see below)

Selection of regular events in the Village Hall

Goldhanger Parish Council

2nd Wednesday of each month 7.30pm.

Website: parish-council.goldhanger.org.uk

Goldhanger Art Society

Every second Thursday of the month 2pm to 4.30pm. £5 non members.

Numbers are limited. Jane - 01621 892565. <http://goldhangerartclub.co.uk>

Goldhanger Kazen Kai Karate Club

Weekly on Thursday evenings. For children and adults.

Mobile Library

Village Hall - every THREE WEEKS on a WEDNESDAY from 13.10 to 13.40 (see back of magazine for dates).

WiFi at the Village Hall

For access please check with a committee member when booking or using the hall



New bookings clerk
needed - see page 11

Village Hall Bookings

Contact Catherine Brown on 788488 or email: cathy_a_brown@hotmail.co.uk

Web: www.goldhangervillagehall.co.uk

Facebook: [Goldhanger Village Hall](https://www.facebook.com/GoldhangerVillageHall)

Twitter: [@Goldhanger_VH](https://twitter.com/Goldhanger_VH)

Hire charges		Goldhanger Resident Rate (per hour)	General Rate (per hour)
Monday-Friday	9.00 - 18.00	£10	£12
	18.00 - 23.00	£15	£18
Saturday-Sunday	9.00 - 18.00	£14	£18
	18.00 - 23.00	£20	£25

Community Page

Goldhanger Sailing Club www.goldhangersailingclub.org.uk

All types of sailing, including sailboarding and canoeing, with racing organised on Sundays during the season, there is something for everyone who loves the water.

Stamps for the Hospice

Your used stamps can be dropped in to the Hospice shops in Maldon or the Bentalls Centre in Heybridge.



Maldon District Council Monthly Surgeries

1st Saturday of the month at the Queens Head
Tolleshunt D'Arcy. from 12 noon to 1pm.

Meet Tolleshunt D'arcy and Tollesbury Ward Councillors
and/or raise issues or problems relating to local council matters.

Bellringing www.bellringing.org/learntoring/

Every Wednesday 7:30pm - 9:30pm and for services on Sundays.
Newcomers welcome.

Contact Andrew Kelso 788284 or email arckelso@mac.com.

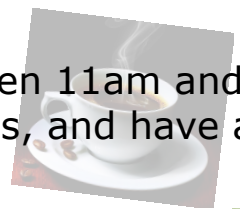
Mother's Union

4th Friday of each month at 1.45pm at Honywood Hall, Hall Road, Great Totham.



Coffee mornings

Community Room at St. Peter's Church on Tuesdays between 11am and 12noon. Everyone is welcome. Pop along, bring your friends, and have a chat over coffee.



Wednesday lunchtime Picnic Service

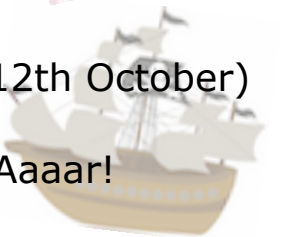
For Parents and toddlers. Last Wednesday of the month in term time. St. Peter's Church.



Shanties in the Pub

Billiards room at the Chequers every other Tuesday (from 12th October) from 7pm.

Just join in the responses or take a lead as you wish. Ooo-Aaaar!



GOLDHANGER PARISH COUNCIL
New website: www.parish-council.goldhanger.org.uk/
Parish Clerk: Julie Webster
2 Stores Lane, Tiptree, CO5 0LH
Tel: 07396 641850
Email: Clerk.GPC@outlook.com

To contact the Parish Council please use the details above.

LIST OF COUNCILLORS

Councillor Julia Bourn Chair	17 Church Street Goldhanger CM98AS	01621 788298 goldhangerparishcouncil@outlook.com
Councillor Hugh Reynolds Vice Chair	21 Fish Street Goldhanger CM9 8AT	01621 788307
Councillor Clive Cheeseman Allotments Officer	3 Maldon Road Goldhanger CM9 8BG	01621 788433
Councillor Sarah-Jane Holmes	8 Maldon Road Goldhanger CM9 8BG	07840 390394
Councillor Stephen Ellis	Charity Farm Cottage Maldon Road Goldhanger	01621 788739
Councillor Michael Sargeant	Wencis 15 Head Street Goldhanger CM9 8AY	01621 788484
Mike Bishop	Fern Lodge 45 Maldon Road Goldhanger CM9 8BG	07904 997338

Any information or personal data supplied by those who contact the Parish Council will be used solely for communication purposes and will not be passed on to any other third party.

The Parish Council's full Privacy Statement and Data Regulation Policy can be found on the Council's website as above.



Queen's Platinum Jubilee

Our Provisional Planned Schedule is as follows



Thursday 2nd June

BBQ at the Sailing Club
Lighting of the Ceremonial Beacon

Friday 3rd June

Open Gardens
Treasure Hunt
Plant Sale
Cream Tea at the Church
Art Competition
Village History Event

Saturday 4th June

Classic Car and Bike display
Jubilee Festival – comprising side stalls, competitions, displays and music

Sunday 5th June

Family Church Service
Bell-ringing
Parachuting Teddies!
Big Lunch/Tea Party

Plenty of volunteers will be required to make this happen.

Email jubilee@the-bish.co.uk if you can help in any way!

Watch out for more info over the upcoming months and for some exciting competitions to take part in!



Queen's Platinum Jubilee

Goldhanger logo design
June 2nd - 5th 2022



Goldhanger is planning its celebrations and to commemorate the occasion we hope Jubilee mugs will be available.

The mugs will have the official logo on one side and our overall design competition winner logo on the other.

To enter a design:

There will be 3 age groups 4-7, 8-12 & 12-14 with a best in class prize, then an overall winner and you should live in Goldhanger to enter.

Your design should be one colour (pencil or a dark colour)

Submit your entry on A4 sized paper by 31/3/22 to Juliabourn@live.co.uk

Take your inspiration from Goldhanger and the Queens jubilee. The 2012 Jubilee mugs included the Parish sign as its logo, so we would suggest something different for 2022.

Goldhanger Church Services

Sunday 6th February 4 Before Lent
Accession of Queen Elizabeth 11
9.30am Parish Communion (CW)

Sunday 13th February Septuagesima
Racial Justice Sunday
10.00am Family Service.

Sunday 20th February Sexagesima
9.30am Morning Prayer

Sunday 27th February Quinquagesima
Church Action on Poverty Sunday (40th Anniversary)
9.30am Parish Communion (CW)

Wednesday 2nd March Ash Wednesday
7.30pm Holy Communion (CW)

On-line Sunday services can be found at:

<https://www.chelmsford-cathedral.org.uk/worship/regular-worship>

<https://www.churchofengland.org/news-and-media/church-online/weekly-online-services>

St Mary's, Maldon, live streams Parish Mass on Sundays at 10.00am on Facebook

On-line Morning Prayer will be on Facebook on Mondays and on YouTube on Wednesdays and Fridays both at 10.00am.

Morning Prayer can be accessed through our Facebook page, YouTube channel and on "a church near you".

Weekday Holy Communion Services

Weekday Holy Communion service from The Book of Common Prayer

Every Wednesday at St Nicholas, Tolleshunt D'Arcy at 10.00am

And

Every Saturday at All Saints, Little Totham at 5.30pm

Please get in touch with Lizzie Armour or the churchwardens if you are considering baptism for yourself or your children, confirmation, and weddings Please contact Rev'd Tracey for funeral arrangements.

Parish Prayers

If you would like someone, an event or concern included in church prayers please contact Kim Evans or George Bunting

Votive candles are lit at Sunday Services.

Raise free donations for the church through Easyfundraising

1. Go to <https://www.easyfundraising.org.uk/causes/stpeterschurchgoldhanger> and join for free.
2. Every time you shop online, log in to www.easyfundraising.org.uk first to find the retailer you want and start shopping.
3. After you've made your purchase, the retailer will make a donation to the church at no extra cost to you whatsoever!

Thank you for your support. Please contact Lizzie Armour, our Benefice Administrator on 07908 776750 or office.blackwaterbenefice@gmail.com for any queries

St. Peter's Church Goldhanger

Priest in Charge of the Blackwater Benefice*	Reverend Tracey Caswell	07742 999 633 blackwaterbenefice@gmail.com
Associate Priests	Reverend Sue Godsmark	01621 891513 suegodsmark@aol.com
	Reverend Sarah Clare	07762 840905 / 01621 868819 sarahclare9@gmail.com
Church Wardens:	Mr George Bunting	01621 929690 gvbunting@gmail.com
	Kim Evans	01621 788698 kwestwood58@aol.com
Benefice Administrator	Lizzie Armour	07908776750 office.blackwaterbenefice@gmail.com
(Please contact Lizzie if you wish to book, a wedding, baptism etc. She is available on Tuesday and Thursday mornings. Messages left at other times during the week will be responded to at regular intervals)		
Church flowers	Mrs Elaine Clark	788686 elaclark@me.com

* Goldhanger, Little Totham & Great Totham and Tollesbury, Salcott, Tolleshunt D'Arcy and Tolleshunt Major

St. Peter's Goldhanger website: www.st-peters-church.goldhanger.org.uk

Flags

No flags this month





Community Speedwatch 2022



Hello everyone,

You may remember in January 2019 there was interest from the community in setting up a community speedwatch group for Goldhanger. We obtained the required number of volunteers, However due to various issues with the organisers, followed by covid we were told training had been delayed, time and time again.

Having recently enquired again, we have been told that the previous organiser has left and there is no access to historical emails and so Goldhanger would need to re-apply to go back on the bottom of the waiting list.

As significant time has passed since the original volunteers came forward, I appreciate circumstances change and so I'm suggesting we start a fresh. If anyone is interested in being part of a community speed watch group please email the Parish Council Clerk.

I enclose the commitments of the group below.

- Number of volunteers required : Minimum of ten, ideally more, as we recommend that monitoring takes place in groups of three.
- Commitment of volunteers : There are no restrictions and we ask volunteers to do whatever they feel comfortable with. Each group works their own rota depending on availability of volunteers.
- Coordinator : Each group will need a dedicated person to coordinate them. This person will be responsible for the equipment, the volunteers and ensuring log sheets are completed and returned to the police for processing.
- Sites : Ideally there should be a minimum of two sites within the community. These should be in a 30mph or 40mph zone. They must be evaluated and approved as being suitable for CSW activities. Sites must be visible, consideration must be given to the safety of volunteers and motorists when choosing sites. There must be a safe place to stand off the road which does not obstruct any pedestrian right of way. If there are no pavements you may be able to use a village green or wide verge. Access to that site must be safe, do not expect volunteers to walk along the road or put themselves at risk at any time. Where can volunteers park if they have to drive to the site? You don't want them parked in the line of vision? Signage needs to be placed approximately 100 meters in each direction and in a suitable location.
- Equipment : We can loan a device subject to funding where groups fulfil the criteria (we do however, currently have a waitlist). Hi-Vis jackets, signs and training will be provided.

- **Monitoring :** We would expect a minimum of two hours monitoring a week whenever possible. This can take place at any time during day light hours and subject to weather conditions. Volunteer safety is paramount and we ask you not to carry out monitoring during poor visibility or slippery road conditions.
- **Objectives of CSW :** To educate road users to speed restrictions and the effect that their speeding is having on local communities. All offenders recorded by CSW are processed by Essex Police and the car details are checked on the police system. A letter is sent for the first offence and second offence and on the third instance they are added to a tasking list to be dealt with by Essex Police Casualty Reduction department. Information provided may also be used for police intelligence.

Julia Bourn - Parish Council (Chair)



**Village Hall
Booking
Clerk
Required**

YOUR VILLAGE HALL



A call out to the Village to see if anyone would be interested in helping out the Village Hall by taking up the role of the Booking Clerk.

For more Info any Questions and/or a Chat concerning the role Please call Anton on 788538



Word of the Month

Niveous *adjective*

Snowy, or resembling snow



WANTED & FOR SALE

To advertise *For Sale* or *Wanted* items in the magazine, the minimum donation is £1 per advert, though if you would like to donate more that would be very welcome and helps the magazine's funds.

The donation should be dropped into 12a Church Street along with your advert.



Greentouch Plastering Services

All aspects of plastering covered including rendering, boarding, skimming

No job too big or too small! Please contact me for a free no obligation quote.

Please contact
Robbie on
07424405036 or
01621 493644 for
further information.



	1	H	2	A	R	3	D	F	4	E	E	5	L	I	6	N	G	7	S
8	H		P		U					L			I			I			I
9	I	M	P	E	L				10	A	R	B	I	T	E	R			
	D		E		Y					T		E			R				H
11	D	R	A	B			12	R	E	T	R	I	E	V	E				
	E		S		13	H			D		A								N
14	N	A	E	V	U	S			15	S	T	U	16	P	O	R			
	A						S		17	T		E		A					Y
18	G	E	19	T	A	H	E	A	D			20	B	R	A	W			
	E		I			H		K			21	S		A					O
22	N	E	P	T	U	N	E				23	T	A	B	O	O			
	D		P		S			I			A			L					D
24	A	N	Y	T	H	I	N	G	G	O	E	S							

Answers to crossword in
January issue





The Platinum Pudding Competition

Would you like to see your pudding creation served up at street parties and other celebrations up and down the country? Fortnum & Mason is inviting you to invent the Jubilee Pudding for The Queen's Platinum Jubilee in 2022.

The winning pudding will be an important part of the celebrations marking Her Majesty's 70 years as Monarch. And the creator of the winning pudding will be invited to be at the centre of the celebrations.

Get cooking, and your creation could be a joyful and delicious part of the first ever Platinum Jubilee.

To enter, please go online to

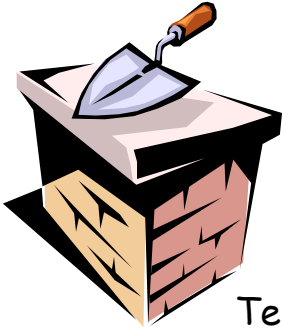
<https://www.fortnumandmason.com/platinum-pudding>

Tide Times

<https://www.goldhanger.org.uk/index.html>

<https://www.tidetimes.co.uk/maldon-tide-times>





Owers & Son

Bricklaying & General Building

"Elvers" Fish Street Goldhanger

Maldon Essex CM9 8AT

Telephone: 01621 788272 Mobile: 07745 204587

E-Mail: mark.owers1@btinternet.com

**Brickwork, General Building, Plastering, Carpentry, Decorating, Fencing
Tiling, Garden Clearance, Roofing, Fascias & Soffits, Guttering & Cladding**

OVER 30 YEARS EXPERIENCE

FULL PUBLIC LIABILITY - FREE ESTIMATES & ADVICE

Carpets and Vinyls Seagrass, Sisal & Coir

**From Nic Lawrence
Your Local Fitter**

**Choose at Home
Re- fits also undertaken
No Job Too Small
Free Estimates**

Very Reliable 25 Years Experience

01621 869344

07771 632028

Goldhanger Village Hall Film Club



Wed 16th February

Doors open 7pm for 7:30pm start

PLEASE BOOK IN ADVANCE & PAY ON THE DOOR

£6
per person

[Booking Contacts](#)

Debbie 01621 788709

Jill 07734 069609

jillcrooks66@icloud.com

plenty of parking behind the hall

Next Film:

The Last Bus - Wed 16th Mar

Proceeds in support of the
Village Hall, Head Street CM9 8AY



D.J. Wait & Son

BUILDING CONTRACTORS

Your complete building service

***Fully Insured
Free Advice***

***Family Business
Free Estimates***

07742957773

01621 334357

djwaitandson@gmail.com

**01621 859 484
07990 972 676**

UPHOLSTERY AND CURTAINS

TRADITIONAL AND MODERN UPHOLSTERY CURTAINS AND BLINDS
BESPOKE FURNITURE CONSERVATORY BLINDS JACARANDA RUGS
BESPOKE LEATHER FRENCH CLUB CHAIRS VOYAGE MAISON RETAILER
FABRICS AND WALLPAPER

www.simonhoulding.co.uk Unit F, Stock Chase, Heybridge, Maldon, Essex CM9 4AA

Ministry Team Message

We are given numbers by so many people, whether it's about Covid, climate change, or the cost of living. Numbers and dates can be both confusing and informative and I hope this will be the latter.

Thinking about dates, and our church of Saint Peter in Goldhanger, the present building dates back to the Normans and William the Conqueror around 1100, but there was probably a Christian church on the site since Saxon times. So, people have been worshiping God here for around 1600 years ago.

Moving forwards in time, those who lived in the village in 1750, would have recently celebrated all 12 days of Christmastide in the church. However, the New Year (1751) started on 25th of March. That's how it had been for since Roman times using the Julian calendar. The next celebration of New Year was on 1st January 1752, only 9 months later. This was because of the change from the Julian calendar to the more accurate Gregorian calendar, which we still use today.

In fact, by 1752 there was an eleven-day difference between the two calendars that needed to be adjusted for. Nothing whatsoever happened in British history between 3 and 13 September 1752. The British Calendar Act of 1751 proclaimed that in Britain (and American Colonies) Thursday 3 September 1752 should become Thursday 14 September 1752. Many people thought they had actually lost 11 days of their lives, and they were angry.

Moving forwards again, to the present day, our church is one of seven grouped together in the Blackwater Benefice. That is Tollesbury, Salcott, Tolleshunt D'Arcy, Goldhanger, Tolleshunt Major, Little Totham, and Great Totham. A benefice describes any ecclesiastical parish or group of ecclesiastical parishes under a single stipendiary minister. And a stipend is what is paid to enable a minister to undertake their role as a full-time priest without the need for them to be in another waged or salaried job. In our case we have Reverend Tracey.

Of course, Tracey can't do all that's needed in the seven parishes on her own. In addition to several non-stipendiary ministers there are Churchwardens and lay people who, like me, can take certain church services. It's a team effort in our benefice. We also have a part-time administrator, Lizzie Armour.

And that's just the tip of the iceberg. Many others do all the things needed including arranging flowers, cutting the grass, cleaning, and ringing bells.

Our churches are not just places for Sunday services, baptisms, weddings, and funerals. They are also places to find peace and contemplation, whether in the churchyard or inside the church. As Tracey talked about in last month's message, a chat with God can help us all cope with life.

Now let's clarify some of the questions about the regular church services. There are two different basic services in our churches. There are those based on the 1662 Book of Common Prayer with its "thy" and "thine"; the language of the time. Then there are those introduced in 2000 called Common Worship, which use present-day language. Both are used in our churches, but the latter are more usual these days.

On some Sundays we have Communion, which is where bread (or wafers) and wine are offered in commemoration of the Last Supper with Jesus. Different services, like Family Service or Morning Prayer, are used on other Sundays. Everyone is always welcome, including children.

I hope this has helped you to understand the church better. However, remember the simple truth: God loves you.

Malcolm Holmes

St Peter's Goldhanger – authorised lay preacher

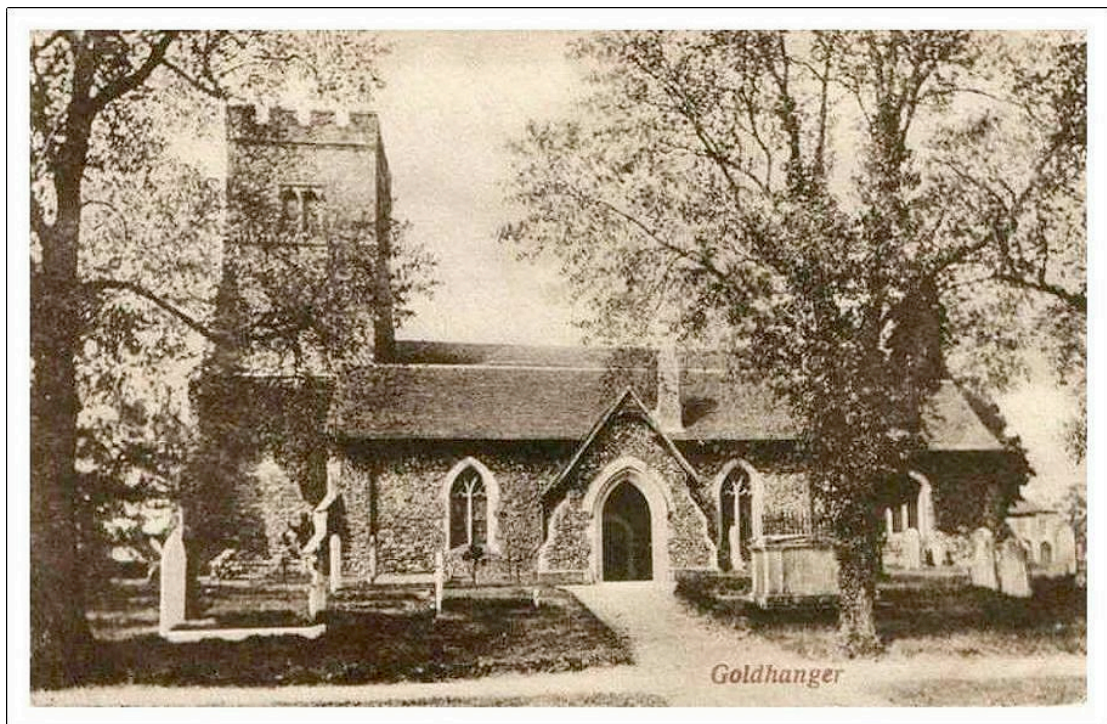


Photo courtesy of David Newman Goldhanger Past



Exterior Cleaning
Garden Maintenance
Soft Landscaping
Mobile Car Washing

Call us on:

Landline: 01621 788292
Stephen: 07857 395905
Lee: 07746 129192



BTN Driveway & Patio Cleaning



<https://btnservices.co.uk>



Keeping the county warm



Fuel Services

Contact BFS for prompt delivery of your domestic heating oil direct from our local Danbury Fuel Services depot. You'll find no better service, no better value.

T 01245 425251 www.bfsfuelservices.uk

The Chequers Inn – We're Back!



The Square, Goldhanger, Essex CM9 8AS

Telephone 01621 788203 Thechequersgoldhanger.co.uk

- Great Home Cooked Menu with Lots of Local Produce
 - Wonderful Selection of Cask Ales & Wines
 - Bar Billiards and Darts
 - Dogs Welcome
 - Great Hospitality and Friendly Service
 - Takeaway Food, Cakes, Coffees, Drinks
- Homemade Scones with Jam & Clotted Cream

We're so pleased to be back and able to do what we do best – serve our guests with great food and drink in a great pub with a great atmosphere and great hospitality.

Dominic and The Team look forward to welcoming you to The Chequers Inn soon

GOLDHANGER PARISH COUNCIL

Notes of the meeting held on the 12th Jan 2022. Full minutes can be viewed on the website or village noticeboard once they have been approved at the next Parish Council Meeting

www.parish-council.goldhanger.org.uk

clerk.gpc@outlook.com

Planning

21/01222	Land adjacent to 15 Fish Street	Objected
21/01288	Tree 20 Fish Street	Objected
21/01257	Tree Bluebell House/10 St Peters Close & The Old Parsonage Head Street	Supported

Enforcement issues

No Updates received

Parking issues

A letter had been sent to a resident confirming support of a dropped kerb at her property

There had been insufficient responses from residents to pursue an application for parking restrictions at this time

Speedwatch A further request for volunteers was being sought in the village and an advert would be placed in the Parish Magazine. A group of volunteers had previously come forward but due to Covid-19 and changes in Speedwatch personnel, this had not been progressed.

Highways

Some flooding had been noted in the village around Xmas with the heavy rain that had been encountered

Marigold Wood

Tree surgeon would be on site very shortly to complete tree work.

Part of the picnic bench order had arrived and the rest would be forthcoming once supplies were available.

Village Pump

The Village Pump work had been chased up and progress made

Bus shelters and defibrillators

No updates although Bus Cage request had been chased up

Queens Platinum Jubilee

Cllr Bishop talked through the progress made so far

Correspondence

A letter had been received from MDC regarding the Rough sleeping Count that took place in Nov 2021. It was noted that there were two people sleeping rough

Other Issues

An awareness letter had recently been circulated from Essex Police regarding Organised Crime Groups -Drugs importation via boats and planes around the Tendring Coastline and local Marinas and boating community were being notified of the signs to look out for.

The next meeting will be held on the 9th Feb 2022 at 7.30pm in the Village Hall.e meeting and it was therefore assumed there was no further update at this time

Puzzled?

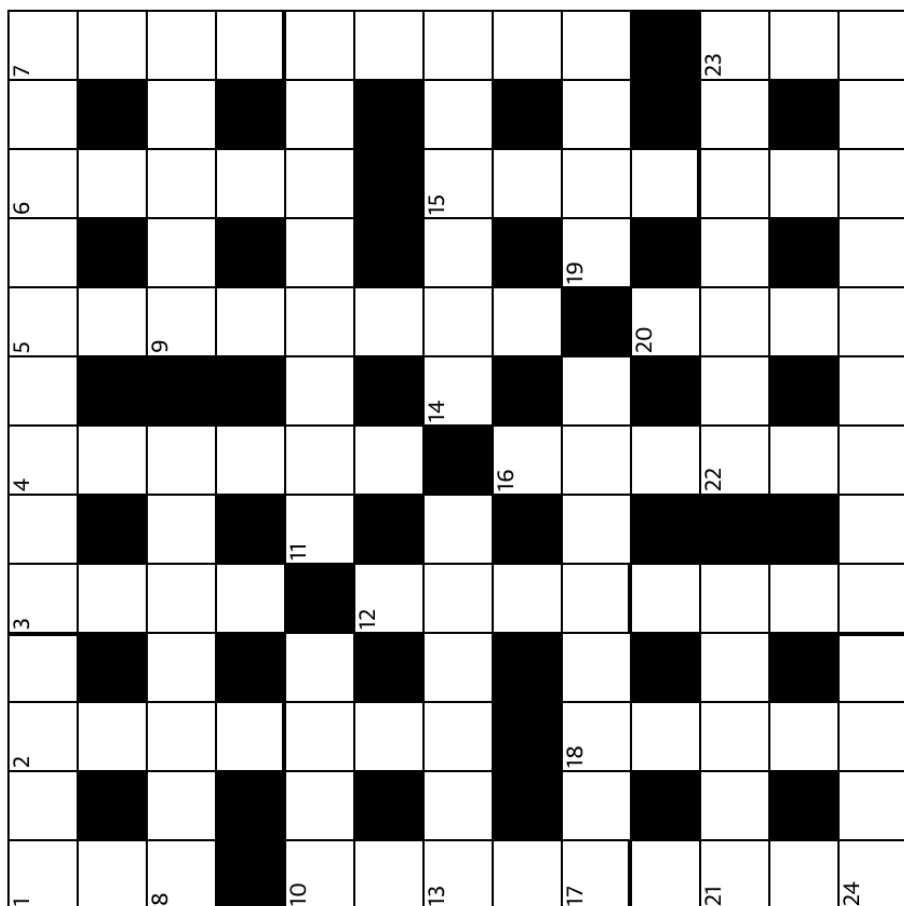
I					D		B	H
H				G	B			
		C	A			F		
E	G			C		A		
	I		H	B	G		C	
		B		F			I	G
		E			C	B		
			G	H				A
D	C		B					I

Each of the nine rows and columns, as well as each of the nine subregions, must contain one and only one of each of the nine letters.

Answers next month

	8	9			5	1	4	
3			8	1	7			6
7	1		6		4	3	8	
	4	3	9					
9	7						1	4
					8	7	3	
	9	6	4		2		7	1
4			1	5	9			2
	2	1	7			4	9	

Fill the grid so that every row, every column and every 3x3 box contains the numbers 1 to 9.



Across

- 1 Poet Laureate from 1930 until his death in 1967 (4,9)
- 8 Like the ideal knight? (7)
- 9 Collier (5)
- 10 Use a straw? (4)
- 11 Dull – slow – dozy (8)
- 13 English physicist, remembered for his law of gravitation, d. 1726 (6)
- 14 Hidden shooter (6)
- 17 Potential performer's try-out (8)
- 19 (At cards) place one's stake (which may be upped!) (4)
- 21 Summarise (briefly) (5)
- 22 Sink clearer (7)
- 24 Uncompromising policy enforcement (4,9)

Down

- 1 Irish dance (3)
- 2 Why cool? (anag) – good gracious (4,3)
- 3 Miserly (4)
- 4 Resolve – pay up (6)
- 5 What's used to clear the air – faint gum (anag) (8)
- 6 Tedium (5)
- 7 Little known runner? (4,5)
- 10 Beach resort city on Monterey Bay, California (5,4)
- 12 Weak area – sentimental affection (4,4)
- 15 Alcoholic drink – kingpin (anag) (4,3)
- 16 Truth (6)
- 18 Interior furnishings (5)
- 20 Prickly seed case (4)
- 23 Fish eggs (3)

Online games and puzzles to keep you amused

Online games and puzzles: <https://www.games.co.uk/games/puzzle>

Online jigsaw puzzles: <https://www.jigsawplanet.com/>

Online brainteasers, maths puzzles, word games, sudokus and memory games: <https://www.mindgames.com/>

Answers next month

GOLDHANGER VILLAGE HALL COMMITTEE

Invites you to



Saturday 12th March

THE VILLAGE HALL

Doors Open 7.00 pm



Eyes Down 7.30 pm

A FUN FAMILY EVENING!



Bring your own drinks & nibbles
Refreshments & cakes will be served
in the interval

CUDDLY COATS DOG GROOMING

BATHING, TRIMMING,
NAILS, PADS,
GROOMING AND
COAT CONDITIONING

BASED IN
TOLLESHUNT MAJOR

PLEASE RING
01621 868852
07802 724510

CUDDLYCOATSDOGGROOMING.CO.UK

NO DOG TOO SMALL

Advertise Here

Contact:

advertising@goldhanger.org.uk

Web Advertising

If you would like your advert included on the Goldhanger website, please contact us. It's pretty cheap for a year.

All advertising (including For Sale and Wanted) needs to be in by midnight on the 13th of the month please.



B P A Kennedy **Plumbing and heating engineer**

Gas and oil boiler servicing/repair

New boilers

Central heating up grades/repair

New radiators

Desludging available

New bathrooms

Ball valves etc

Telephone :home 01621 890039
mobile 07879643583

Children's Pages

Children's Quiz

1. On which continent is the country of Brazil?
2. What is a baby seal called?
3. What is the name of the main fairy in "Peter Pan"?
4. In "Finding Nemo", what is Nemo's dad called?
5. What is the name of the hero in "The Lion King"?
6. What type of animal is a Labrador?
7. Buenos Aires is the capital city of which country?
8. What type of bird is a pintail?
9. What is the longest snake in the world?
10. Which sport is played with a shuttlecock?

Answers on page 31

**What do you get when you cross
a snowman and a vampire?**



**Why are fish so smart?
Because they live in schools!**



DID YOU KNOW?

A bolt of lightning
can be five times
hotter than
the surface
of the sun.



**Q: What do you call a bee
that lives in America?**

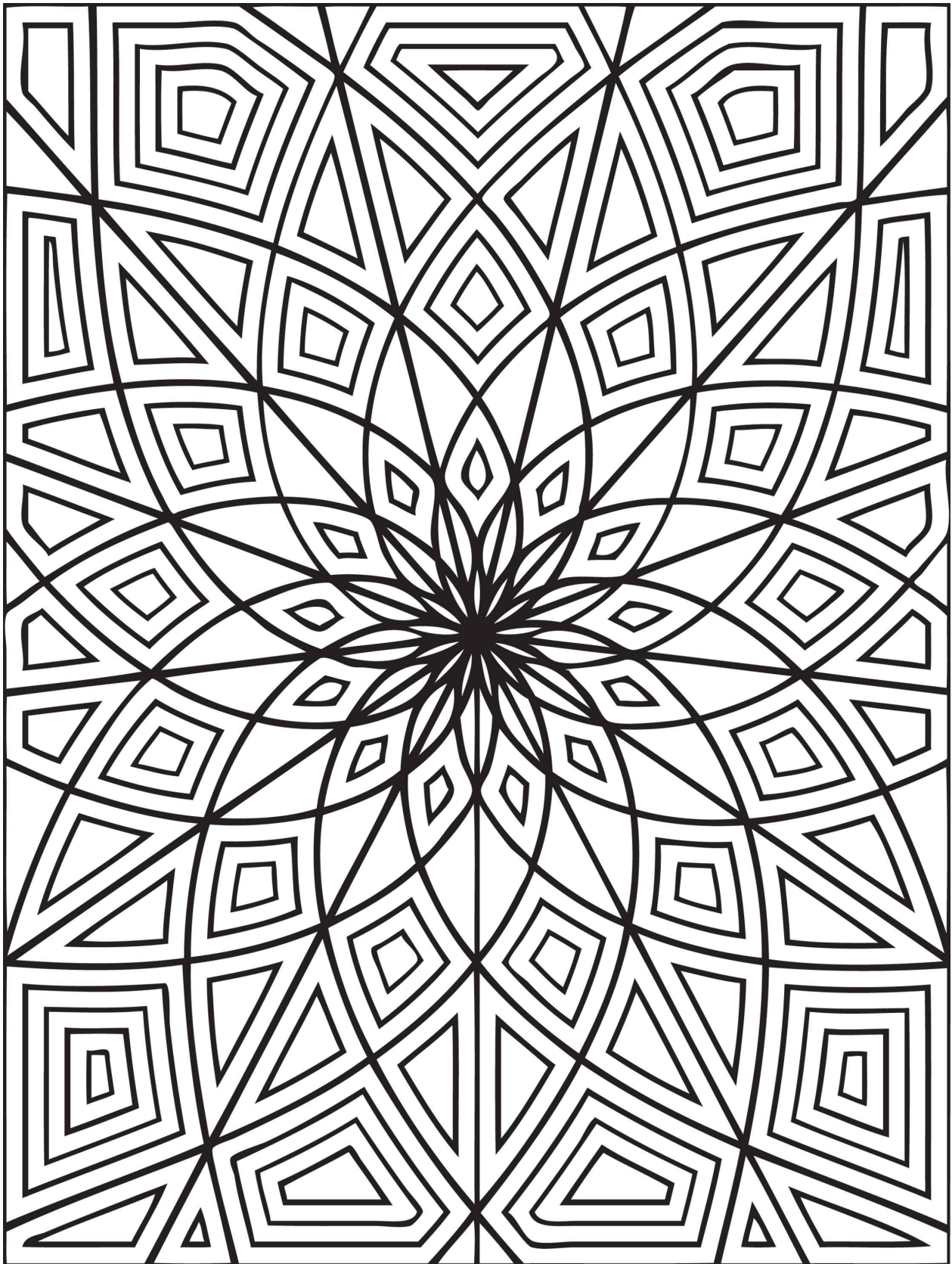


A: A USB

Children's Pages

(Adults can join in too)

Get your colouring pencils out



© 2007 Geometrip, LLC.

www.geometrip.com

A.G. Smith

Funeral Directors & Monumental Masons



- Private chapel of rest
- Mercedes Benz hearse & limousines
- 24 hour service
- Hand crafted memorials
- Home visits by appointment
- Prepayment funeral plans

Maldon – 01621 854 293

7 Spital Road, Maldon CM9 6DY

Southminster – 01621 774 557

44 Station Rd, Southminster CM0 7EW

agsmithfunerals.co.uk



Serving our local community since 1912



Our friendly technicians are qualified professionals who can help assist you with:

Virus/Malware prevention & removal
Laptop and PC repairs & upgrades
Password removal and recovery
Data backup and recovery
Wired and wireless network setup
Internet setup & broadband upgrades
Custom built Systems

Onsite & Remote support
Competitive Rates
Technician based in Goldhanger
Business services offered

Still using XP? You may be vulnerable to cyber attacks. Contact us for help and advice.

Adam: 01621 789873 | Adam@PuterCare.com | www.PuterCare.com

Recipe of the month

Roast sweet potato and carrot soup

Preparation time: 15 minutes

Cooking time: 35 minutes

Serves 4



Ingredients

- 500g sweet potatoes, peeled and cut into chunks
- 300g carrots, peeled and cut into chunks
- 3 tbsp olive oil
- 2 onions, finely chopped
- 2 garlic cloves, crushed
- 1 litre vegetable stock
- 100ml crème fraîche, plus extra to serve

Method

1. Heat oven to 220C/200C fan/ gas 7 and put 500g chunked sweet potatoes and 300g chunked carrots into a large **roasting tin**, drizzled with 2 tbsp olive oil and plenty of seasoning.
2. Roast the vegetables in the oven for 25-30 mins or until caramelised and tender.
3. Meanwhile, put the remaining 1 tbsp olive oil in a large deep **saucepan** and fry 2 finely chopped onions over a medium-low heat for about 10 mins until softened.
4. Add 2 crushed garlic cloves and stir for 1 min before adding 1l vegetable stock. Simmer for 5-10 mins until the onions are very soft, then set aside.
5. Once the roasted vegetables are done, leave to cool a little, then transfer to the saucepan and use a **hand blender** to process until smooth. Stir in 100ml crème fraîche, a little more seasoning and reheat until hot.
6. Serve in bowls topped with a swirl of crème fraîche and a good grinding of black pepper.

Mobile Library dates & times

Dates	Location	Stop name	Arrives	Leaves
2022 16 February 09 March	Ulting	Doe's Corner	9:40	9:55
	Ulting	Ulting Lane/Water Co. Houses	10:00	10:15
	Heybridge	Colne House	10:45	11:15
	Heybridge	Coopers Avenue	11:20	11:50
	Heybridge Basin	Bus Stop	12:00	12:15
	Heybridge Basin	Daisy Meadows car park	12:20	12:50
	Goldhanger	Village Hall	13:10	13:40
	Heybridge	Plantation Hall	14:45	15:15
	Langford	Little Hills	15:30	16:00

What goes where?



Essex Police Contacts

Call 999 (emergency) if:

- A crime is in progress
- Person suspected of a crime nearby
- There is a danger to life
- Violence is being used or threatened

Call 101 for any non-emergency contact with the Police. This number covers all of England and Wales but you get the option to speak to Essex Police. Alternatively you can report a crime and more at <https://www.essex.police.uk/do-it-online/>

The Goldhanger Neighbourhood Watch email system is free & confidential. It sends emails with information & advice on current issues in the village. Contact goldhangernw@outlook.com for more information.

Crimestoppers

0800 555 111

You can contact them anonymously with information about crime

**Our collection day is Friday;
Landfill and Recycling on alternate weeks.**

• Answers to Children's Quiz on page 26

1. South America
2. Pup
3. Tinkerbelle
4. Marlin
5. Simba
6. Dog
7. Argentina
8. Duck
9. Python
10. Badminton

Website of the Month

Your editors present a quirky, interesting, surprising or who-knows-what web site that may be of interest. Hand-curated by your intrepid cybernaut navigators Chris and Stephen 😊

H2G2

The Earth edition of the Hitchiker's Guide to the Galaxy. Enough said.

<https://h2g2.com>



DOMESTIC APPLIANCE REPAIRS

Prompt and Reliable Service

Washing Machines—Dishwashers
Tumble Driers—Fridges & Freezers

NEW APPLIANCES SUPPLIED
AT COMPETITIVE PRICES

Also Large Stock of New & Used
Spare Parts

PLEASE RING ALAN TAYLOR
01621 773709

Mobile: 07885 483595

Family Run Business
Est. 20 yrs

Oven temperature conversions

Centigrade	Farenheit	Gas Mark
140°C	275°F	1
150°C	300°F	2
160°C	325°F	3
180°C	350°F	4
190°C	375°F	5
200°C	400°F	6
220°C	425°F	7
230°C	450°F	8
240°C	475°F	9

COVID-19 - Goldhanger Parish Council

The situation and advice continues to change, so please check government websites, for the latest information. You cannot rely on what you read on Social Media, you should always verify information yourself from a trusted source.

Goldhanger Parish Council website <http://parish-council.goldhanger.org.uk> has links to the advice from Essex County Council, and a facebook page link to Essex coronavirus action.

There is further help available from:

Essex Adult Social Care 0345 603 7630 (08:45-16:30)

socialcaredirect@essex.gov.uk

facebook.com/essexcoronavirusaction

twitter.com/essexaction

The Goldhanger village notice boards will be updated with advice and information regularly.

If you need to contact the Parish council please refer to the contact details at the front of the Parish magazine or on the Goldhanger Parish Council website.

Broadleaf Fencing

For all your fencing needs

Call for a free estimate

01621 888621

07483 126957

www.broadleaffencing.co.uk



Experienced



Competitively priced



Highly rated



Supply and install fences & gates
Bespoke pergolas & decking
Fence & gate repairs
Paving & patios

Universal Credit helpline

Telephone: 0800 328 5644

Please only use this number if you are unable to claim online

Monday to Friday, 8am to 6pm

Key websites

GOV.UK is the primary site for all the key information to support individuals, businesses and other organisations. Here is a link to the dedicated pages [GOV.UK: Coronavirus](#), which includes information on how to stay safe.

DWP's employment and benefits support

The [Employment and benefits support website](#) includes the latest guidance and messages on sick pay, existing benefit claims, new claims to benefit, self-employment, housing and more.

Touchbase

[Register](#) to receive the DWP Newsletter – Touchbase which is sent out each week to keep you up to date on changes.

Coronavirus business hub

[The business hub on GOV.UK](#) is the first point of call for people seeking government information on support for business.

HMRC Help and Support

Employers in particular may wish to [register to receive help and support emails from HMRC](#). Individuals and businesses can sign up to receive email alerts about a range of help and support products that are available. These include live and recorded webinars, YouTube videos and online guides.

BUS TIMETABLE

Monday to Friday

95 Tollesbury to Maldon	Hedingham Omnibus				
TOLLESBURY The Square	0735	0920	1130	1430	1605
TOLLESHUNT D'ARCY School	0740	0925	1135	1435	1610
GOLDHANGER Square	0745	0930	1140	1440	1615
HEYBRIDGE Osea Road	0750	0935	1145	1445	1620
HEYBRIDGE Mill Beach Hotel	0752	0937	1147	1447	1622
HEYBRIDGE Square	0755	0940	1150	1450	1625
MALDON Tesco Store	0758	0943	1153	1453	1628
MALDON High Street	0801	0946	1156	1456	1631
MALDON Blackwater Leisure Centre	0805	0950	1200	1500	1635
MALDON Morrisons	0810	0955	1205	1505	1640
95 Maldon to Tollesbury	Hedingham Omnibus				
MALDON Morrisons	0825	1040	1250	1520	1645
MALDON Blackwater Leisure Centre	0830	1045	1255	1525	1650
MALDON High Street	0835	1050	1300	1530	1655
MALDON Tesco Store	0839	1054	1304	1534	1659
HEYBRIDGE Square	0843	1058	1308	1538	1703
HEYBRIDGE Mill Beach Hotel	0846	1100	1310	1541	1706
HEYBRIDGE Osea Road	0848	1102	1312	1543	1708
GOLDHANGER Square	0853	1108	1318	1548	1713
TOLLESHUNT D'ARCY School	0858	1113	1323	1553	1718
TOLLESBURY The Square	0903	1118	1328	1558	1723

The Blackwater Link - 90

Runs from Morrisons in Maldon to Witham Ebenezer Close (passes Witham Station)
Take the 95 to Bentalls and pick up the 90 there.

For more details contact 01702-541511

BUS TIMETABLE

Saturday

95 Tollesbury to Maldon	Hedingham Omnibus			
TOLLESBURY The Square	0900	1100	1300	1440
TOLLESHUNT D'ARCY School	0905	1105	1305	1445
GOLDHANGER Square	0910	1110	1310	1450
HEYBRIDGE Osea Road	0915	1115	1315	1455
HEYBRIDGE Mill Beach Hotel	0917	1117	1317	1457
HEYBRIDGE Square	0920	1120	1320	1500
MALDON Tesco Store	0923	1123	1323	1503
MALDON High Street	0926	1126	1326	1506
MALDON Blackwater Leisure Centre	0930	1130	1330	1510
MALDON Morrisons	0935	1135	1335	1515
95 Maldon to Tollesbury	Hedingham Omnibus			
MALDON Morrisons	0955	1155	1355	1625
MALDON Blackwater Leisure Centre	1000	1200	1400	1630
MALDON High Street	1005	1205	1405	1635
MALDON Tesco Store	1010	1210	1410	1640
HEYBRIDGE Square	1015	1215	1415	1645
HEYBRIDGE Mill Beach Hotel	1017	1217	1417	1647
HEYBRIDGE Osea Road	1019	1219	1419	1649
GOLDHANGER Square	1025	1225	1425	1655
TOLLESHUNT D'ARCY School	1030	1230	1430	1700
TOLLESBURY The Square	1035	1235	1435	1705

Hedingham Omnibuses:

01206 769778
www.hedingham.co.uk

Stephenson's Buses:

For the Blackwater Link - 90
 01702 541511 (0900-1730)
www.stephensonsofsex.com

HEALTH

Blackwater Medical Centre	876760
Longfield Medical Centre	876433
Tollesbury Surgery	869204
St Peter's Hospital <i>NHS</i> (Maldon - no A&E)	725323
Broomfield Hospital <i>NHS</i> (Chelmsford, has A&E)	01245 362000
Colchester General Hospital <i>NHS</i> (has A&E)	01206 747474
NHS Advice (non-emergency)	111

Yes, I know, but is a pancake
really a cake?



LOCAL PUBLIC SERVICES

Maldon District Council	854477
Job Centre Chelmsford	0845 606 0234
Local Police (non-emergency)	101 (<i>puts you through to Essex Police</i>)

HELP & ADVICE

Maldon Citizens Advice Bureau	841195
Social Services	08457 430 430
Victim Support (charity for victims of crime)	08 08 16 89 111
Women's Aid	01245 493114
Alcoholics Anonymous	01904 644026
Childline	0800 1111
The Samaritans	0345 909090
Salvation Army	853942
Gingerbread (Charity for single parents)	01245 352708
Outhouse East (LGBT Charity)	0345 123 23 88 (<i>7pm-10pm weekdays</i>)
National Domestic Abuse/Violence Helpline	0808 2000 247 (<i>open 24 hrs, every day</i>)

ELECTRICITY & WATER

UK Power Networks	0800 783 8838
Anglian Water (Sewage flooding)	03457 145 145
Essex & Suffolk Water	0345 782 0999

TRAVEL

National Rail Enquiries	0845 748 4950
Hedingham Omnibuses Ltd	01206 769778 or 564581
Regal Busways	01245 249001
First Eastern National Buses	0845 678 2977
Bus Station Chelmsford	01245 263859
Bus Station Colchester	01206 572478
Stansted Airport	0844 335 1803

SPORTS CENTRES

Blackwater Leisure Centre	851898
Witham Leisure Centre	0845 260 1535